

ARTMETAL ET FRAMEX

FAMILLE ANIMAUX

Collections :

JANVIER - GRUSON - PRAT - WAGNER - VOGLER - LACHEZ

JANVIER - GRUSON - PRAT

17, RUE PASTOURELLE

75003 PARIS

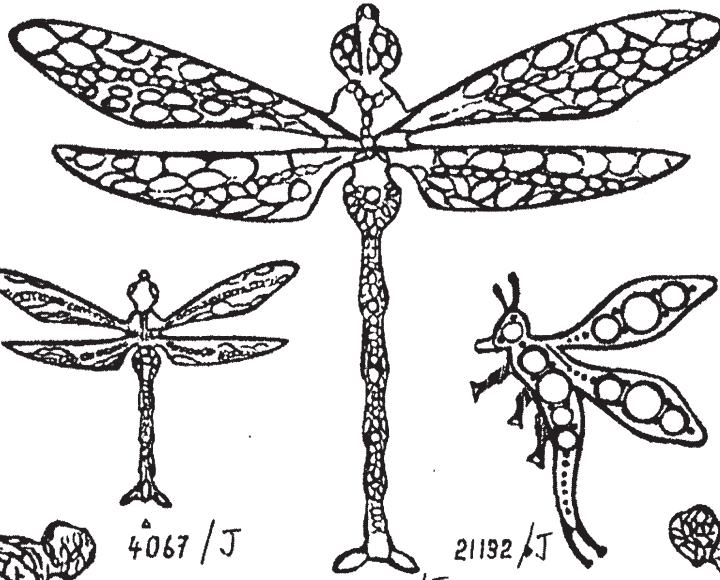
TEL : (33) 1 — 42 72 14 11

FAX : (33) 1 — 42 72 54 19

LIBELULES AVEC PEU DE RELIEF



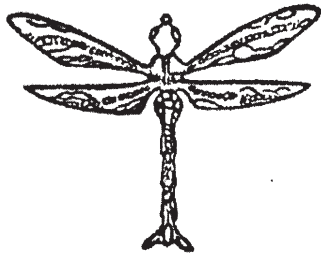
4033 / J



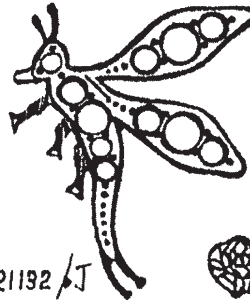
4068 / J



4032 / J

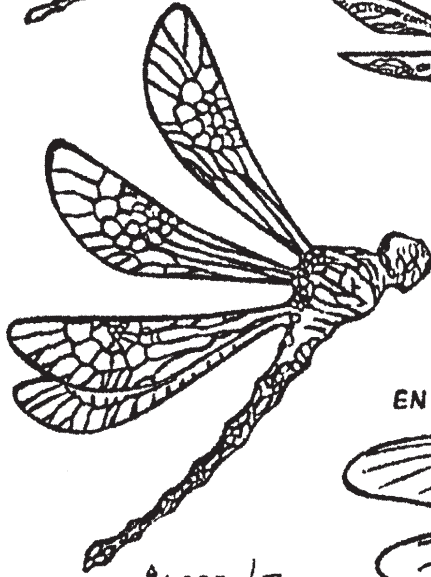


4067 / J

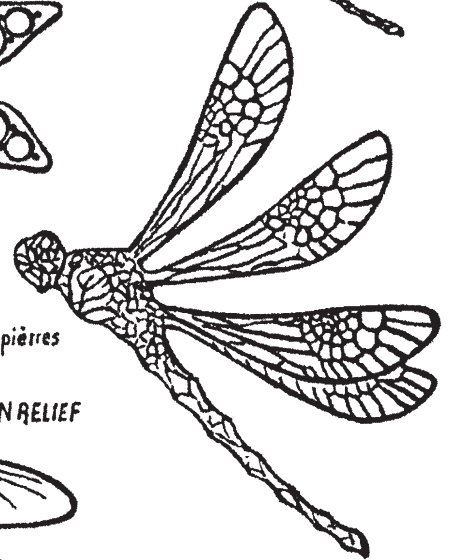


21192 / J

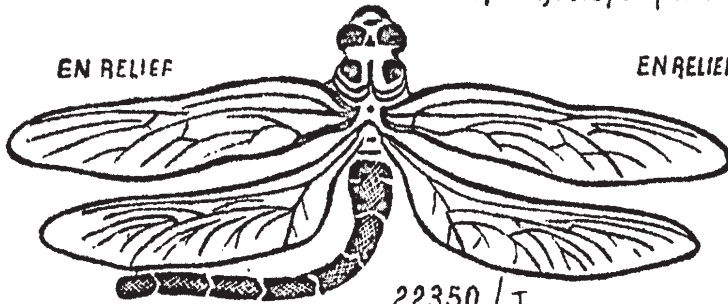
A plat ajouré pour pierres



4035 / J



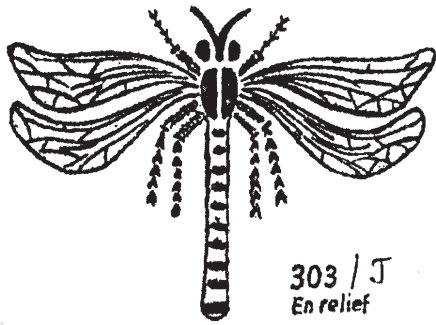
4034 / J



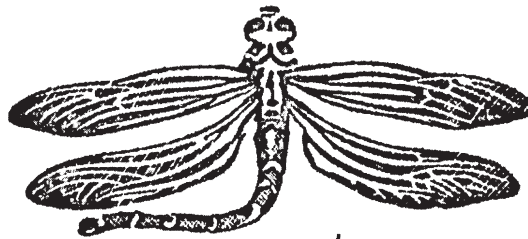
22350 / J

EN RELIEF

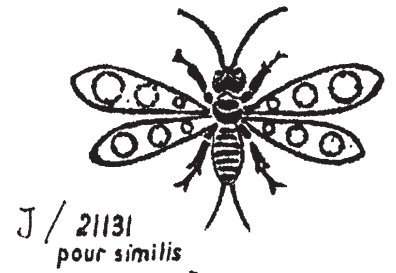
EN RELIEF



303 / J
En relief



22351 / J



J / 21131
pour similis



4601 / J



J / 7484 en plein



J / 8968 p. similis



J / 7565 en plein



4603 / J



4602 / J



4604 / J



22352 / J



J / 18956

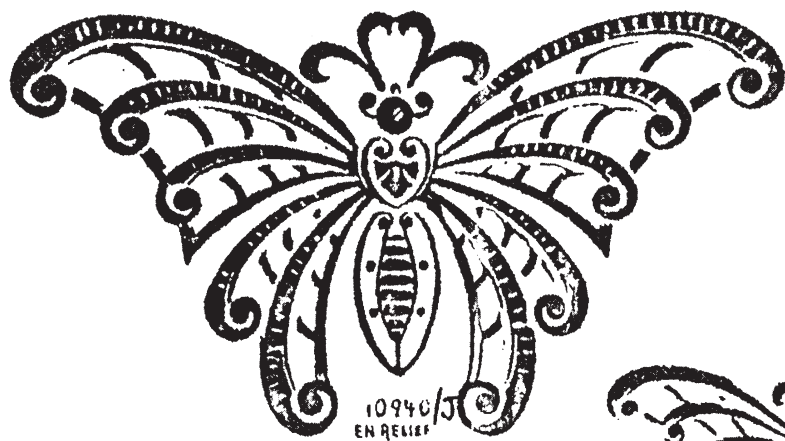


18958 / J

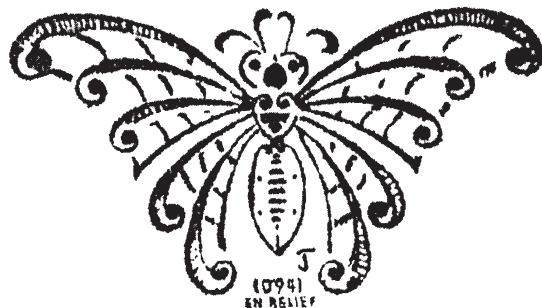


18957 / J

Papillons en Relief



10940 / J
EN RELIEF



10941
EN RELIEF

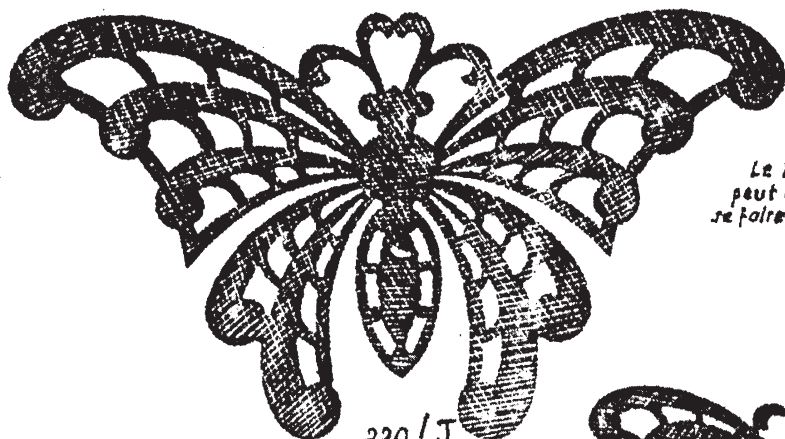


10942 / J
en relief



10943 / J
en relief

papillons découpés



220 / J
DECOUPE

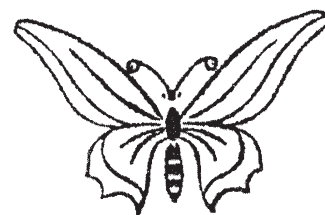
Le N° 10943
peut également
se faire en découpé



218 / J
DECOUPE



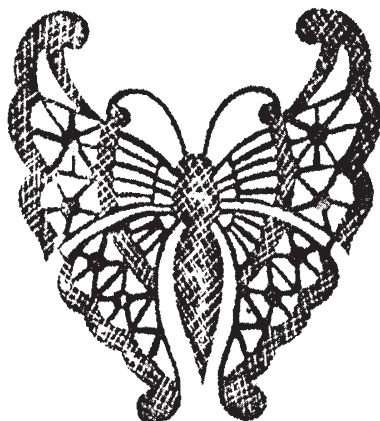
217 / J
DECOUPE



22364 / J



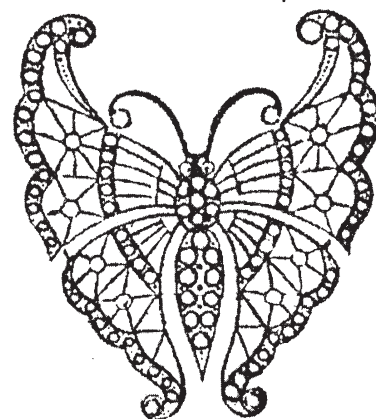
J/6322 EN RELIEF



J/219 DECOUPE

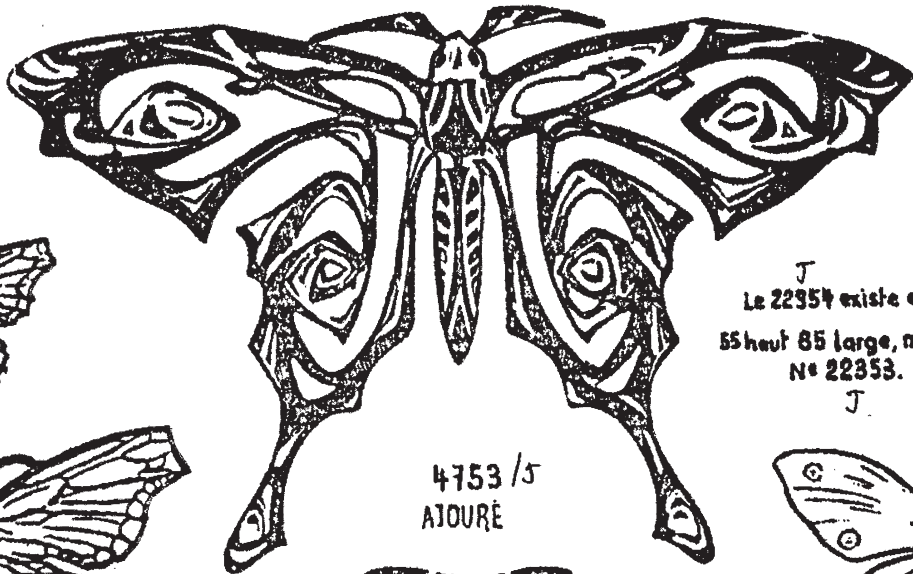


6343 / J



J/ 6312 POUR SIMILIS

PAPILLONS



4753/5
ATOURE



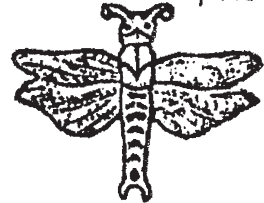
J/4038 PLEIN



J/4037 PLEIN



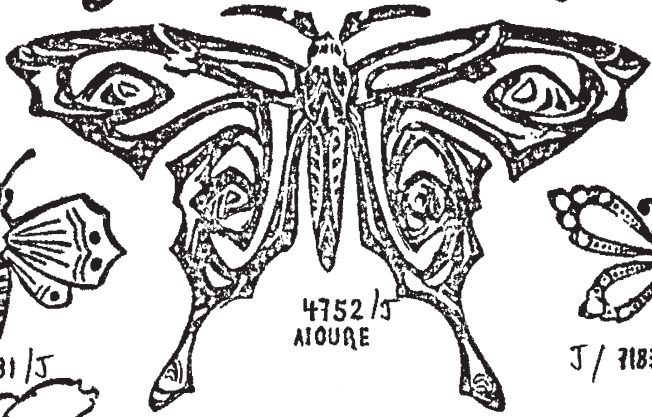
J/4036 PIEM



11732/5



11731/5



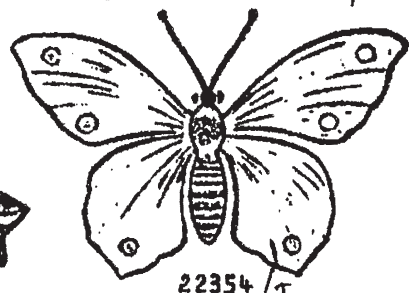
4752/5
ATOURE



J/7183 POUR SIMILIS



2694/5



22354/5

J
Le 22354 existe en
55 haut 85 large, max.
No 22353. J



22356/5



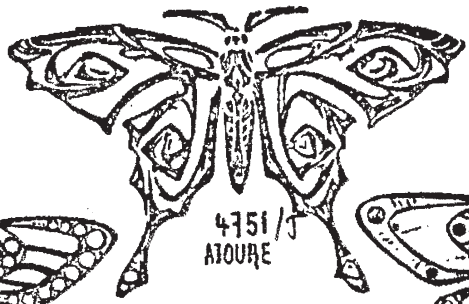
22355/5



J/13384 POUR EMAIL



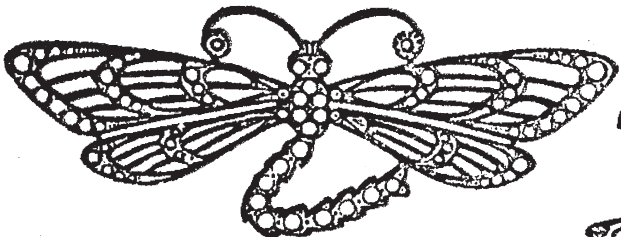
J/13385 POUR EMAIL



4751/5
ATOURE



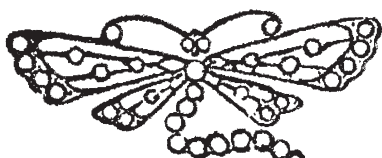
7702/5



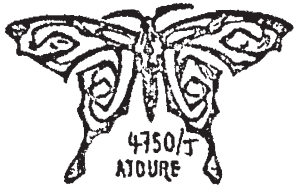
J/6313 POUR SIMILIS, en découpé No 216/5



J/6323 UNI



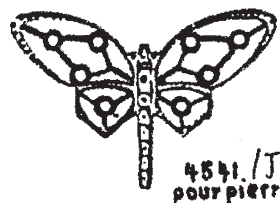
J/7147 pour SIMILIS/découpé No 265/5



4750/5
ATOURE



J/6439 pour SIMILIS/découpé 214



4541/5
pour pierres



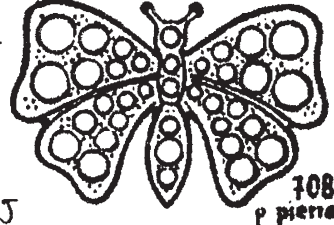
6327/5



22501/5

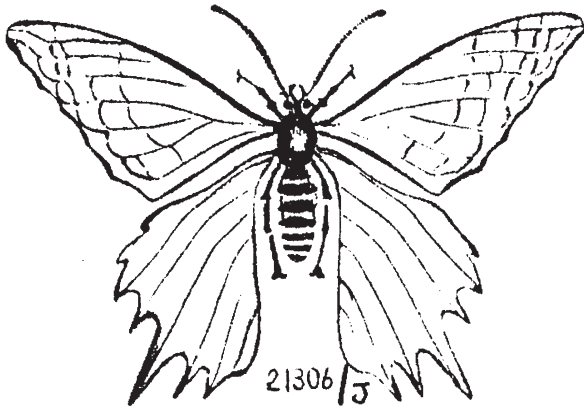


6328/5

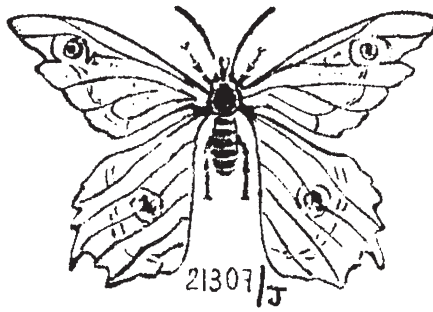


108/5
p pierres

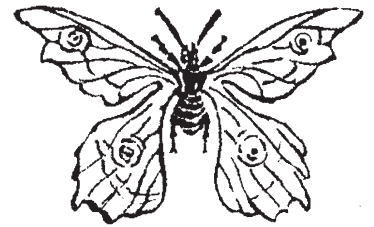
PAPILLONS



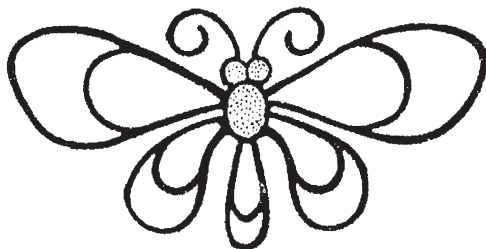
21306/J



21307/J



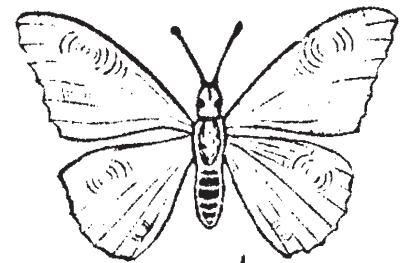
21305/J



4614/J



EN RELIEF
1289/J



302/J



12362/J



J/1290 EN RELIEF



J/1291 EN RELIEF



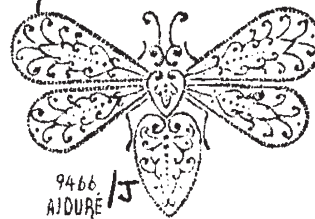
J/473 EN RELIEF



12361/J



9464/J



9466
AJOURE/J



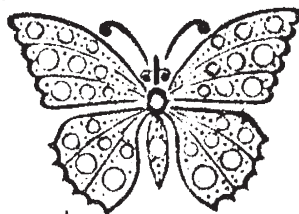
474 EN RELIEF/J



12360/J



J/6580 pour SIMILIS



J/7007 pour SIMILIS



J/7008 pour SIMILIS



J/475 EN RELIEF



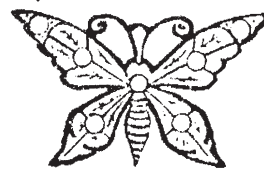
J/975 EN RELIEF



J/6339 pour SIMILIS



J/6339 en DECOUPE



J/7403 pour EMAIL et PIERRES



J/476 EN RELIEF

INSECTES EN RELIEF MOUCHES ABEILLES ETC.



21308 / J



ailes unies 18963 / J



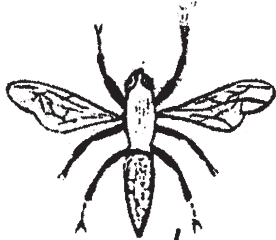
18964 / J
corps similis
ailes unies



18973 / J
corps similis
ailes avec chatons perlés



21133 / J
en 25/100 pour pierres



306 / J



305 / J



en relief 304 / J



18952 / J
ailes unies

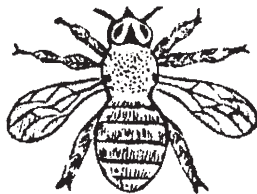


J/18953
ailes unies corps similis



Coccinelle en relief

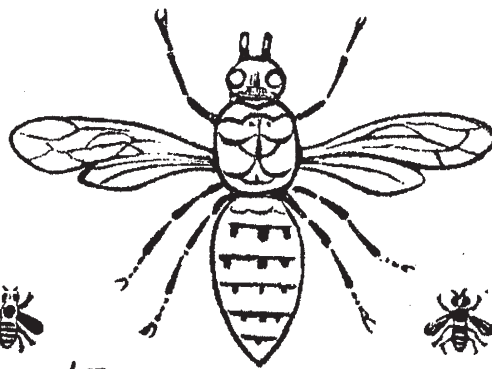
301 / J



en relief 12363 / J



22383 / J



en relief
1280 / J

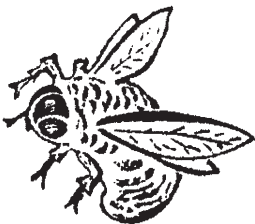


12048 / J
en relief J/12368 en relief

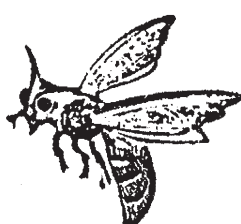
Coccinelle pour similis



en relief 7122 / J



en relief 800 / J



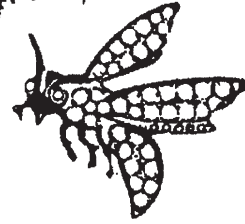
en relief 801 / J



ailes unies 18950 / J



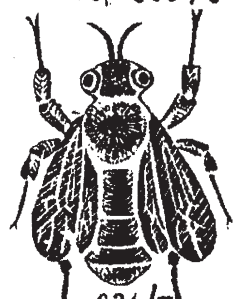
18951 / J
corps pierres



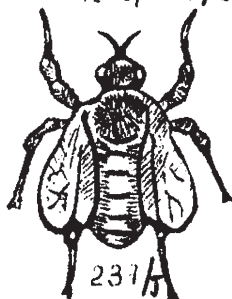
en épais 7832 p. similis / J



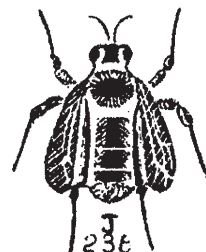
7899 / J



236 / J
à repercer à la main



237 / J
à repercer à la main



238 / J
à repercer à la main



239 / J
à repercer à la main



240 / J



241 / J



242 / J



13348 / J 13347 / J 13346 / J 13345 / J



18873 / J



Cigale 18971
en relief



18874 / J



22382 / J



22384 / J



22390 / J



22379 / J



1981 / J

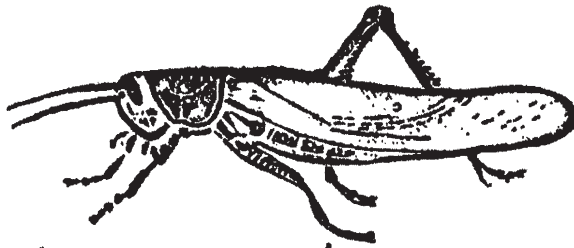


1982 / J

INSECTES EN RELIEF



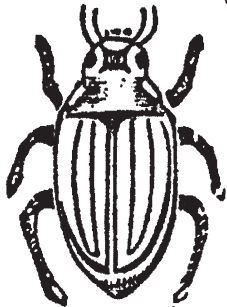
310 / J



1292 / J

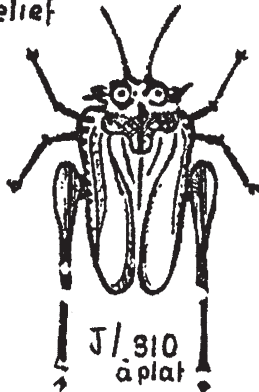


1860 / J



1299 / J

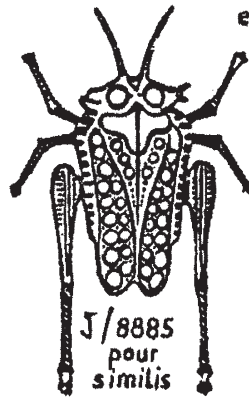
en relief



J/310 à plat

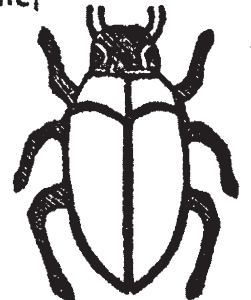


à plat 1860 / J



J/8885 pour similis

en relief



1294 / J

peut être embouti comme N° 310 / J



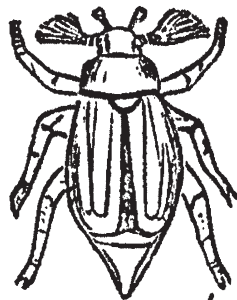
22385 / J



22379 / J en relief



21673 / J en relief



en relief 135 / J



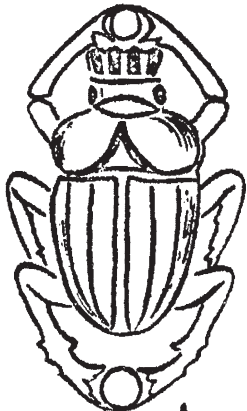
21675 / J pour ou sans émail en relief



21719 / J



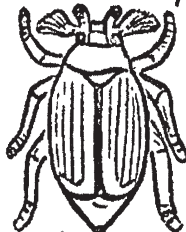
21720 / J



21672 / J



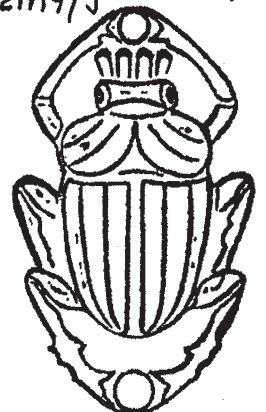
17005 / J dessous



J/136



301 / J



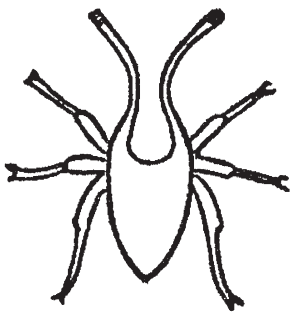
21674 / J pour ou sans émail



17004 / J dessous



137 / J



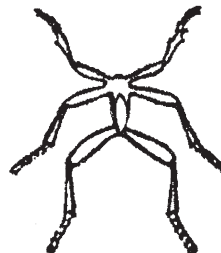
J/12403 dessous



J/12402 dessous



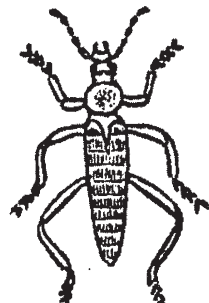
J/17011 dessous



17012 / J



J/17013 dessus

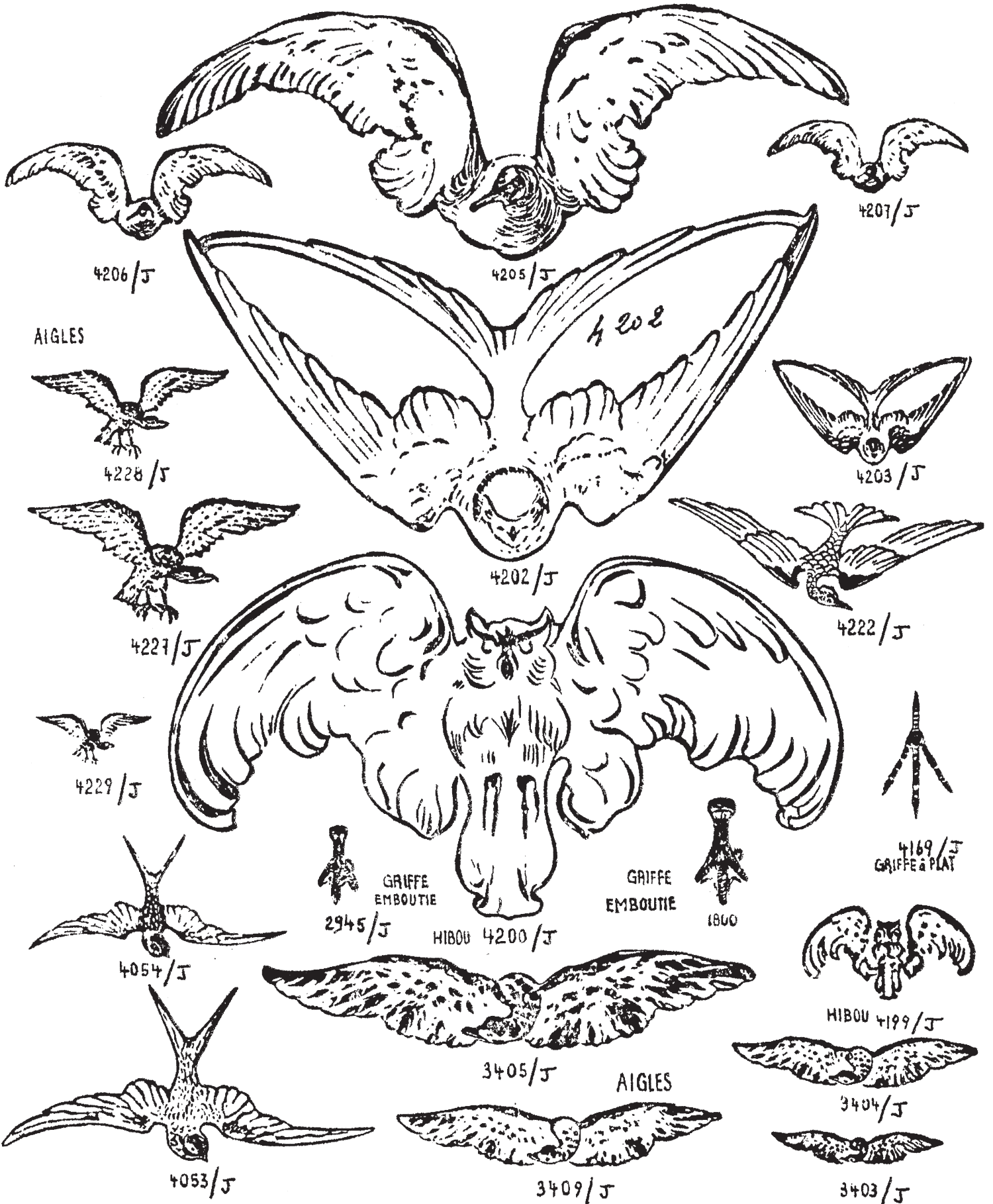


J/17014 dessous



17015 / J dessous

ANIMAUX AVEC PEU DE RELIEF



CHAUVE-SOURIS



avec peu de relief

4226 / J



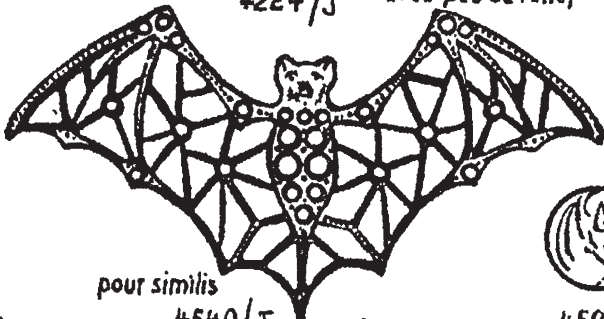
4225 / J



4224 / J avec peu de relief



avec peu de relief 4223 / J



pour similis 4540 / J



4598 / J



4596 / J



4597 / J



1441 en relief, en épais / J



pour pierres 7003 / J



10950 / J



10949 / J



7004 / J



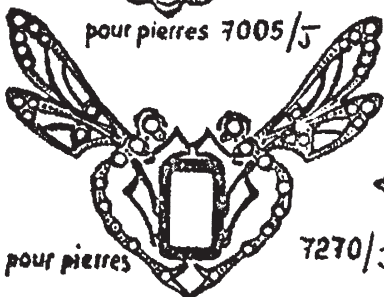
pour pierres 7005 / J



10948 / J

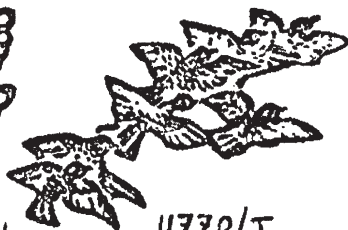


7006 / J



pour pierres

7270 / J



11770 / J en relief



1325 / J en relief



11733 en relief / J

LIBELLULES



4208 / J



4209 / J



4210 / J



cigogne 5464 / J



3844 / J cigogne

ANIMAUX AVEC PEU DE RELIEF



4232 / J



4231 / J



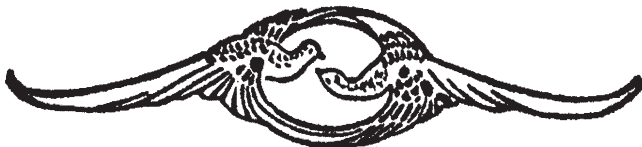
4230 / J



4235 / J



4236 / J



4233 / J



4237 / J



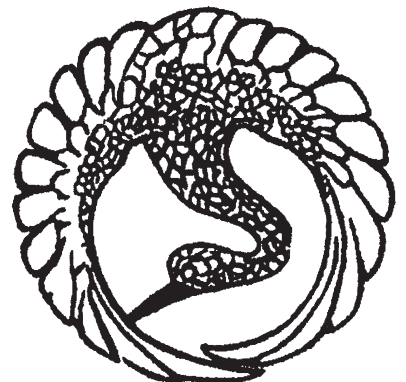
4234 / J



4051 / J



4595 / J



4052 / J



4046 / J

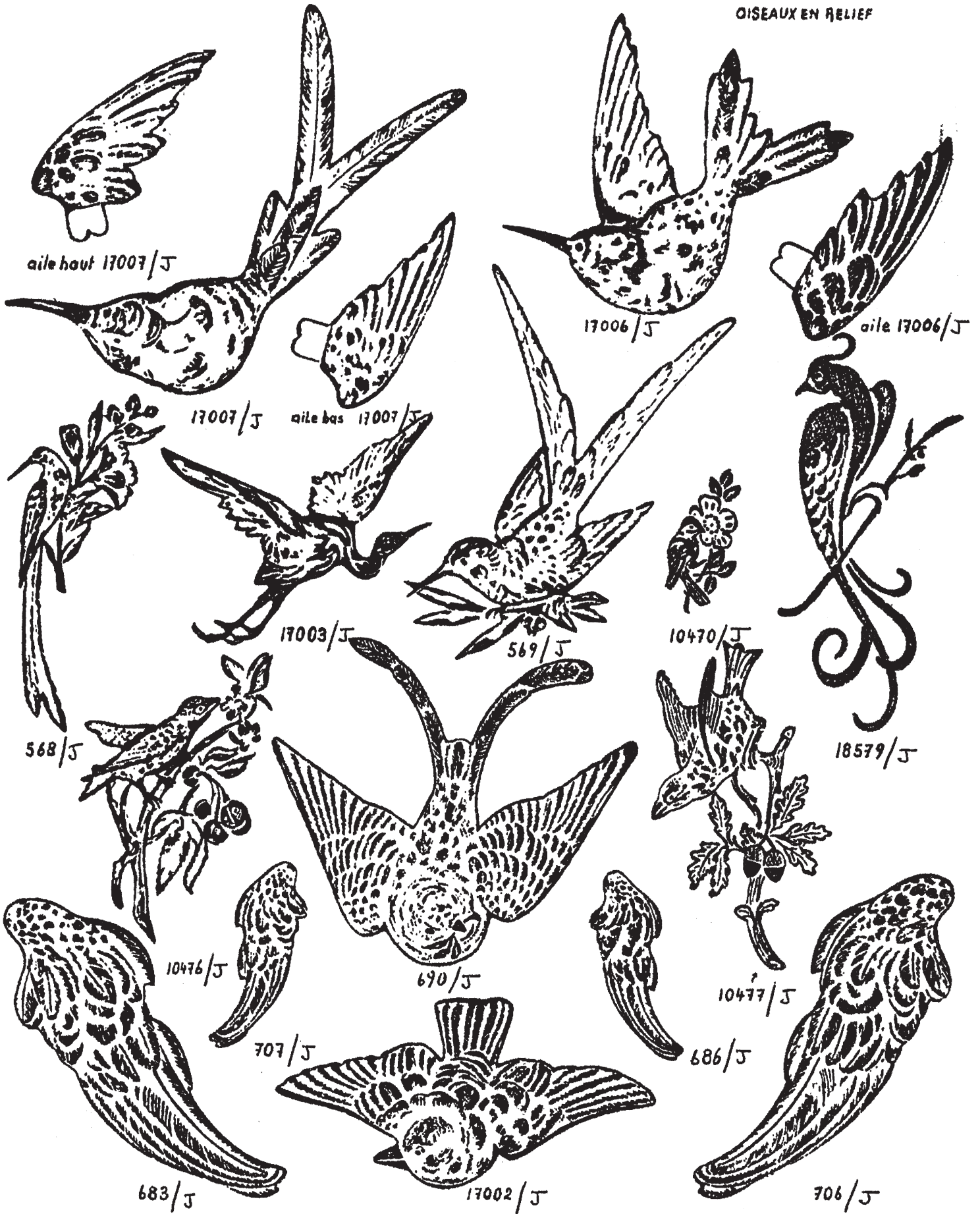


4594 / J



4047 / J

OISEAUX EN RELIEF



OISEAUX EN RELIEF



Similis 6780 / J



Pour émail 7195 / J



Similis 7181 / J



7101 / J



7100 / J



Similis 7123 / J



Similis 7177 / J



22362 / J



22363 / J



Similis 22504 / J



21303 / J



11946 / J



21304 / J



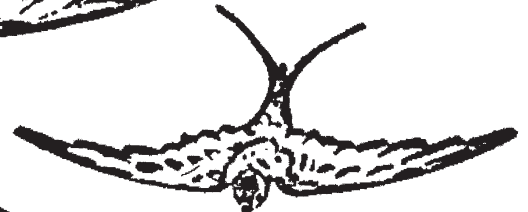
21299 / J



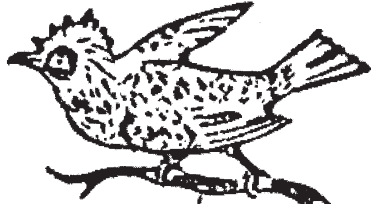
21302 / J



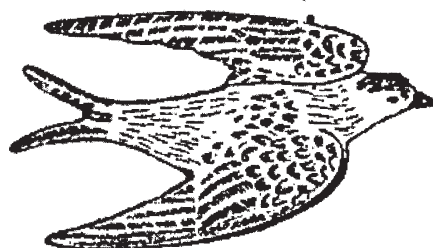
21301 / J



21300 / J



13344 / J



5986 / J



5987 / J



2296 / J



410937 / J



J / 5985



dessus



1470 / J



410936 / J

12364 / J

OISEAUX EN RELIEF EN EPAIS OU EN CX



13358/5



13359/5



13360/5



13361/5



13362/5



13363/5



13364/5



13357/5



13356/5



13355/5



13354/5



13353/5



13352/5



13351/5



13365/5



13366/5



13367/5



13368/5



13369/5



13370/5



13371/5



13378/5



13377/5



13376/5



13375/5



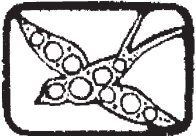
13374/5



13373/5



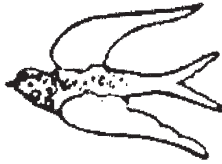
13372/5



pour 7330 similis/5 13350/5



13391 p'email/5



13392 pour'email/5



13349/5 pour similis 7329/5



11785/5



11786/5



5948/5



5949/5



5950/5



9024/5



9026/5



9028/5



9030/5



11787/5



uni 11721/5



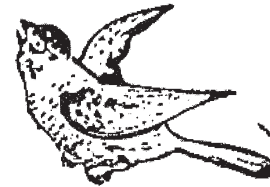
9031/5



9029/5



9027/5



9025/5



uni 11723/5



uni 11722/5



11784/5



3846/5



843/5 embouli 828/5



844/5 embouli 840/5



845/5 emb.842/5



uni 11724/5

ANIMAUX AVEC PEU DE RELIEF



4157/J



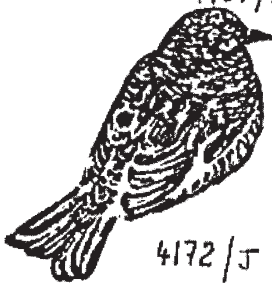
4156/J



4158/J



4159/J



4172/J



4171/J



4170/J



4175/J



4174/J



4173/J

En relief, avec ou sans tige



4160/J



4161/J



4162/J



4166/J



4167/J



4168/J



4163/J



4164/J



4165/J



1702/J



1703/J



1846/J



1847/J



21405/J



21413/J en relief avec ou sans tige

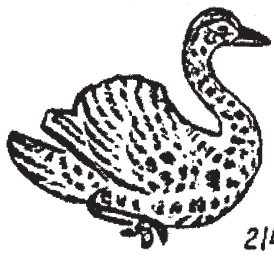


21414/J en relief avec ou sans tige



21406/J

en relief, avec ou sans tige



21403/J



21401/J

21423/J



21402/J



21404/J



7735 pour similis/J



21399/J



21400/J



12090/J

TOUS LES CYGNES SONT EN RELIEF

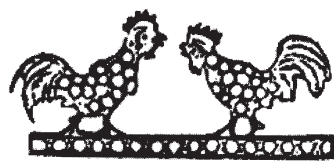
COQS



Coq pour émail en plein 21251 / J



Coq en relief 21250 / J



Coq pour similis 21245 en plein



4061 / J



4054 / J

TETES DE COQS en plein avec peu de relief



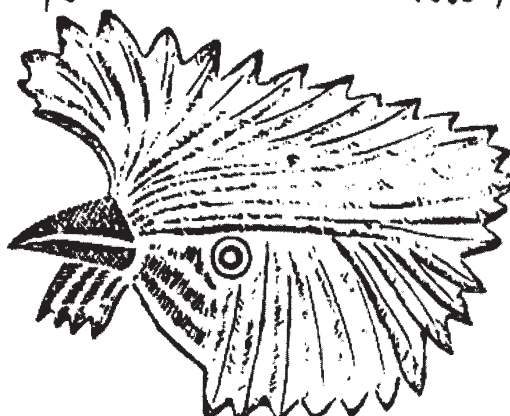
4060 / J



4062 / J



J/5459 tête de coq en relief 12518 / J



tête de coq en relief 12508



4070 / J

18334 / J coqs pour émail



J/4591 Coqs avec peu de relief, en plein

4592 / J

4593 / J



18336 / J



18335 / J



5988 / J



5989 / J



5990 / J



2105 / J



2082 / J



22394 / J



22393 / J



22392 / J

Coqs en relief

Coqs pour similis en plein

Coqs pour émail en plein

Coqs avec peu de relief en plein



7732 / J



7731 / J



18564 / J



18565 / J

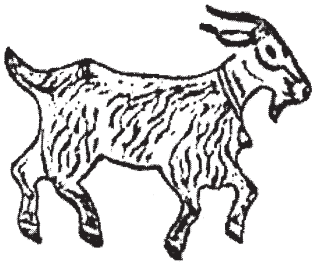


4157 / J

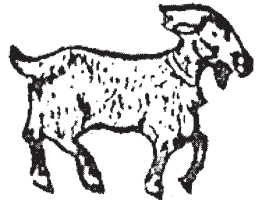


4156 / J

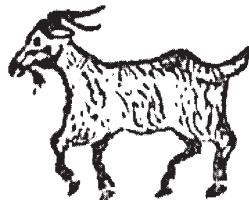
ANIMAUX EN RELIEF



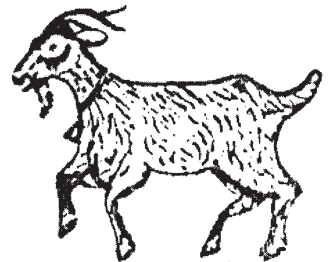
12371 / J



5983 droite / J



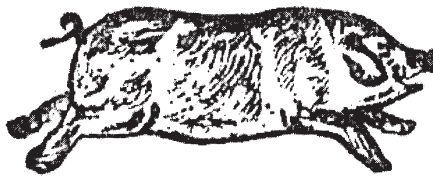
5983 gauche / J



5982 / J



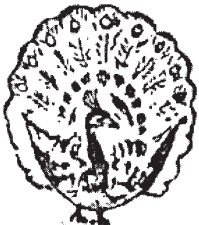
droite 5972 / J



5973 / J



5972 gauche / J



308 / J



7787 sans relief / J
pour similis



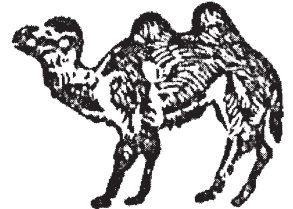
5984 / J



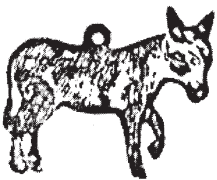
7734 / J
sans relief pour similis



7788 / J
sans relief pour similis



21422 / J



21418 / J



1283 droite / J



Les oreilles des 2 ânes sont à part



1283 gauche / J



21421 / J



22357 / J



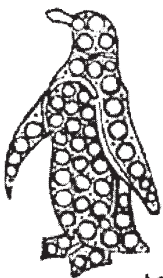
22358



22359



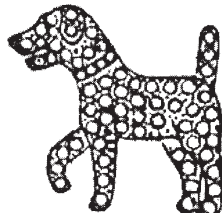
22360 / J



22500 pour similis
sans relief / J



21419 droite / J



22499 / J
sans relief pour similis



21420 gauche / J



22500 en découpé / J



21416 droite / J



21417 gauche / J

CAVALIERS



1466/J



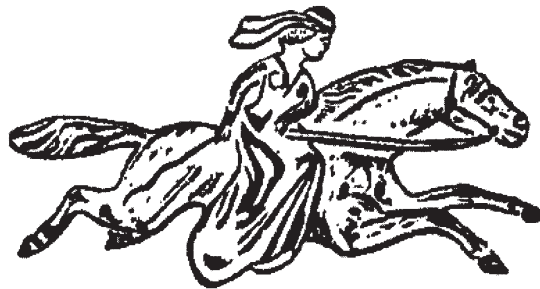
1778/J



1468/J



1467/J



1472/J



1469/J



5443/J



5444/J



5445/J



5446/J



5439/J



5440/J



5441/J



5442/J



15891/J



15892/J

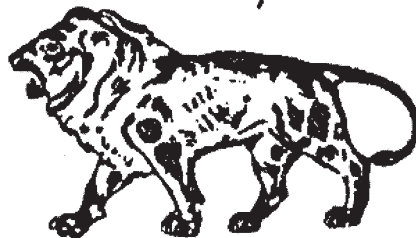


15898/J

LIONS



1285/J



1282/J
En découpé No 227/J



1286/J

TAUREAUX



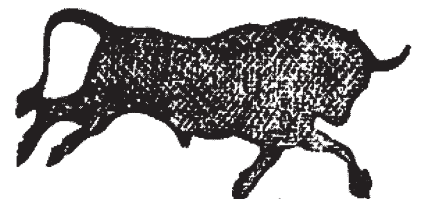
1281/J



1820/J



1779/J



découpé No 223/J

REPR. INTERDITE

TOUS LES MOTIFS DE CETTE PLANCHÉ SONT EN RELIEF

ANIMAUX EN PLEIN
avec emplacement pour une pierre



11742/J



11743/J



11744/J



11745/J



11746/J



11747/J



11748/J



11749/J



11750/J



11751/J



11752/J



11753/J

ANIMAUX EN PLEIN POUR SIMILIS



7742/J



7743/J



7744/J



7745/J



7746/J



7747/J



7748/J



7749/J



7750/J



7751/J



7752/J

ANIMAUX EN RELIEF EN CREUX



18817/J



18818/J



18819/J



18820/J



18821/J



18822/J



18823/J



18824/J



18825/J



18826/J

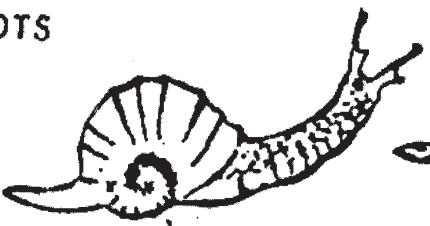


18827/J

ESCARGOTS



795 en relief/J



4071 avec peu de relief/J



829 en relief/J



en relief 18828/J



en relief 1297/J



en relief p. similis 18946/J



Crabe en relief



774/J en relief 5475/J



5467/J



5466/J



5465/J



en relief 5474



7789/J Crabe p. similis sans relief



2061/J



en relief 2081/J



18944/J



2064/J



2062/J



en relief 2068/J

SOURIS EN RELIEF



4605/5

4599/5



4606/5

J/4600 avec peu de relief



J/9014 avec anneau, 9015 sans.



J/9018 avec anneau, 9019 sans.

J/9016 avec anneau, 9017 sans.



9012/5

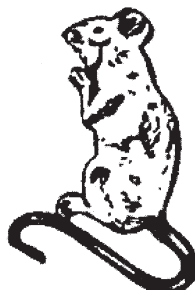
9013/5

J/9020 avec anneau, 9021 sans



9022/5

9023/5



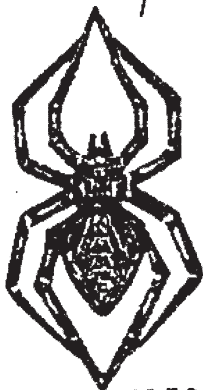
J/9004 avec anneau
9005 sans anneau

J/9010 sans anneau
9011 avec anneau



J/9000 avec anneau J/9007 avec anneau

J/9001 sans anneau 9006/5 sans anneau



18960/5
araignée en relief

12359/5
araignée en relief

J/9008 sans anneau
9009 avec anneau

18961/5
p. pierres en relief



18817/5
en relief

J/9002 avec anneau
9003 sans anneau

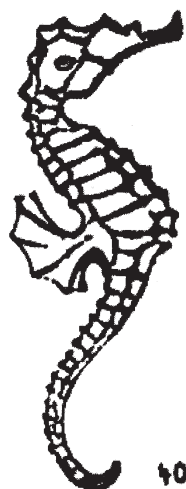
11743



7347/5
p. pierres



POISSONS



4063/J



4064/J



POUR CINAIS
8904/J



4065/J



4066/J



21410/J



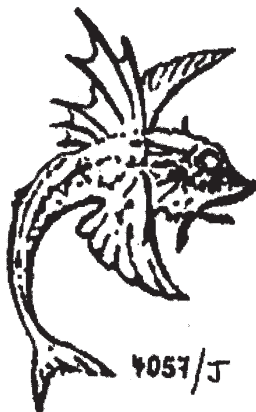
1814 1815
EN RELIEF/J



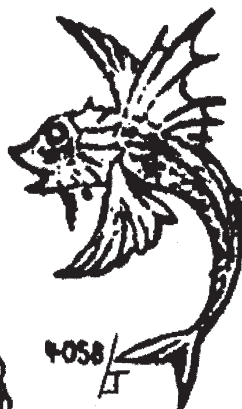
4073/J



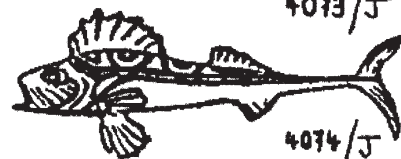
21411/J



4057/J



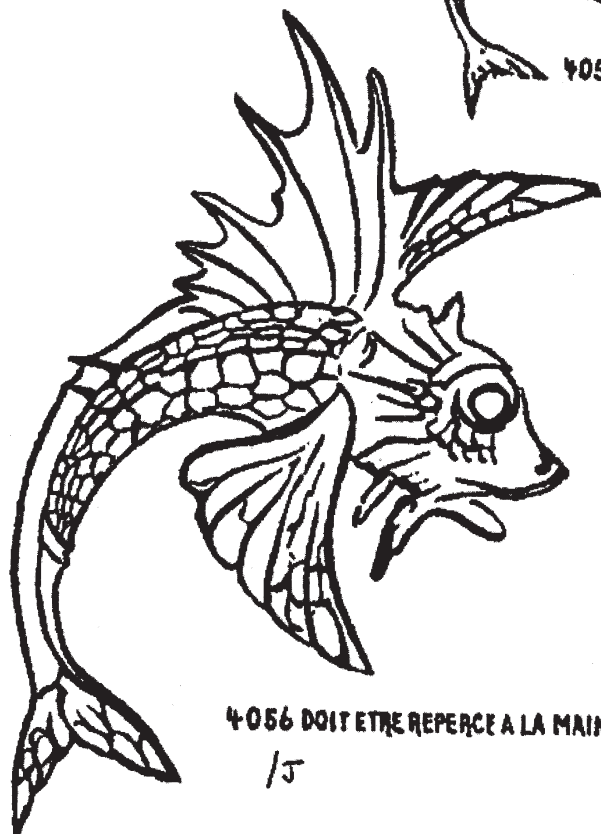
4058/J



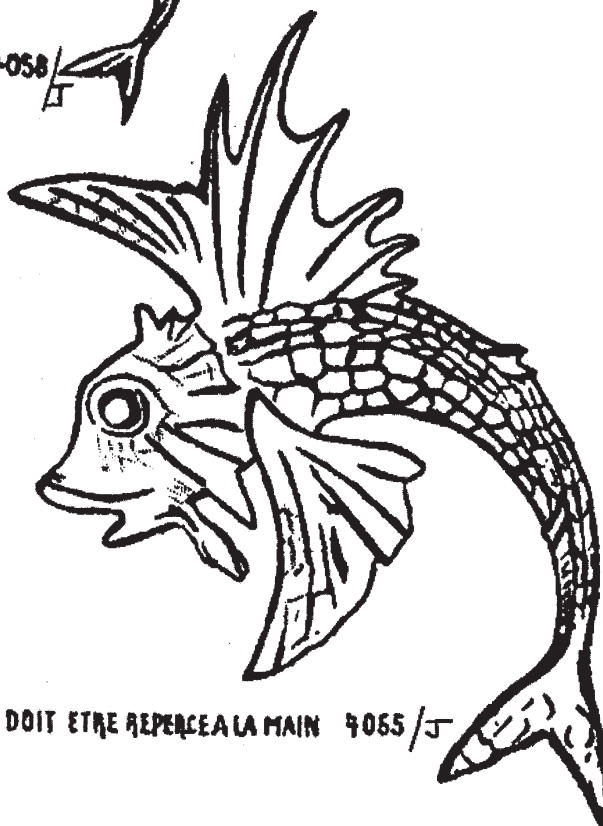
4074/J



10292 ou 1805
/J

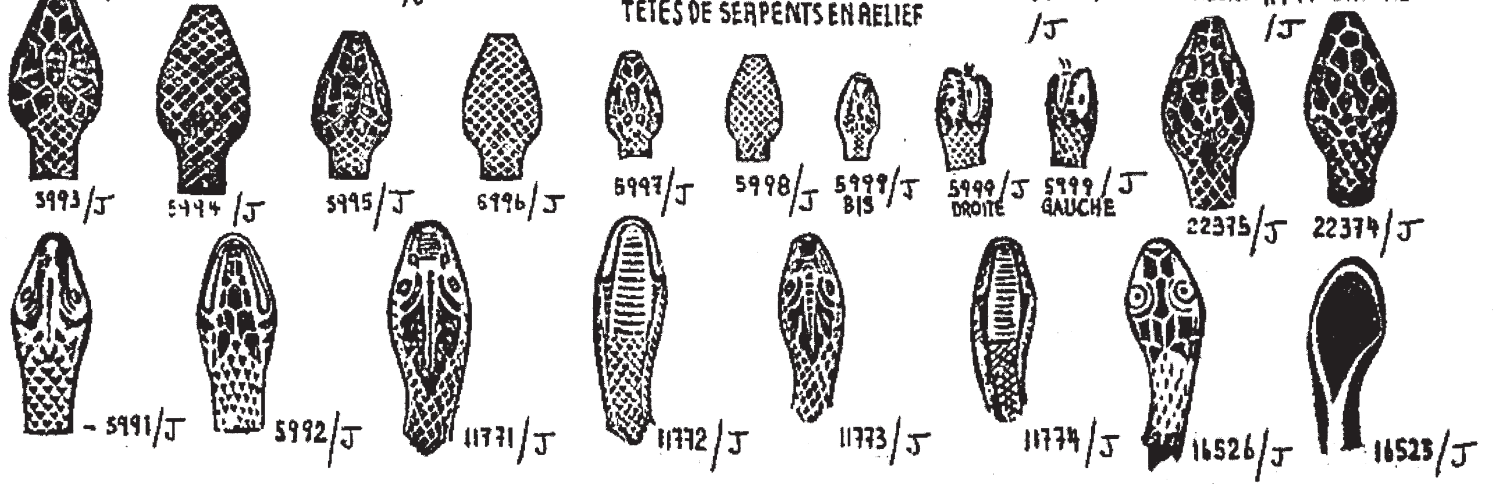
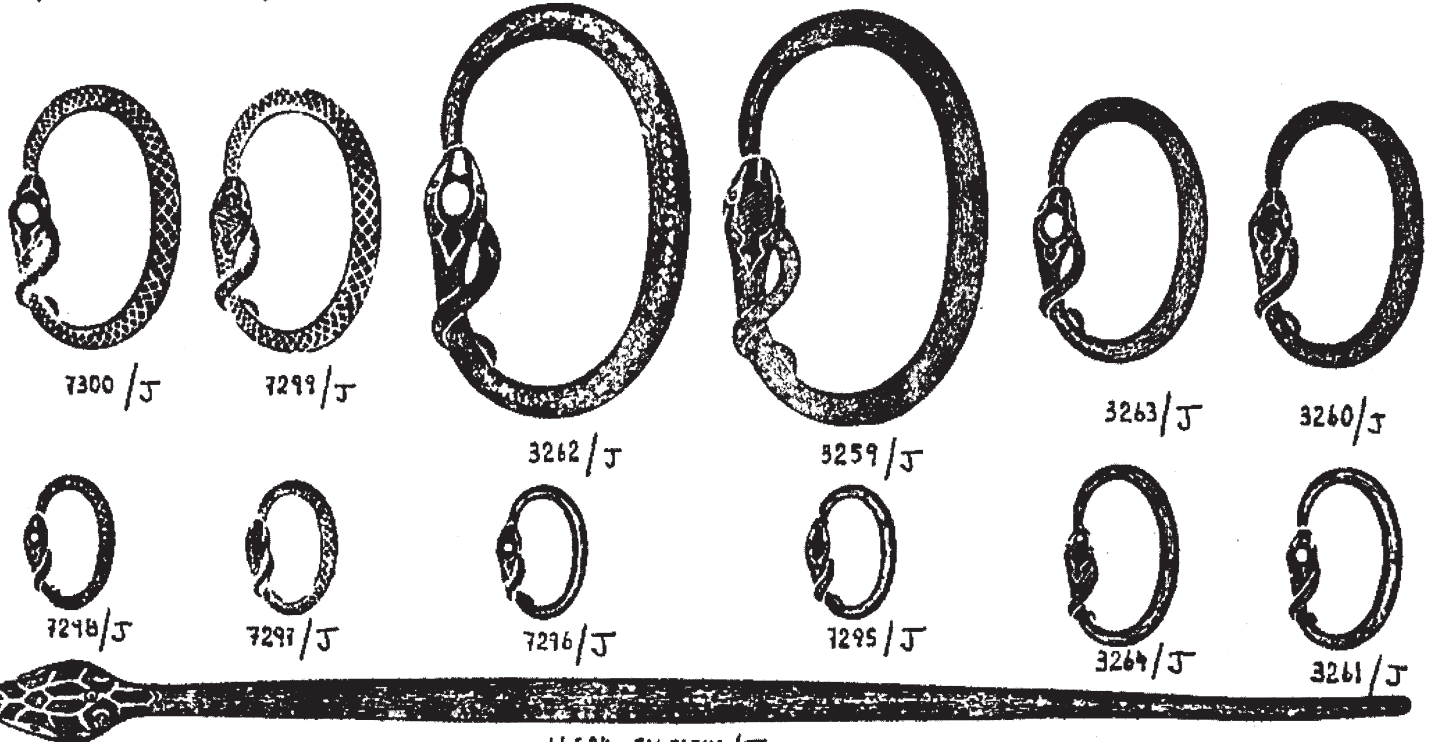


4056 DOIT ETRE REPERCE A LA MAIN
/J

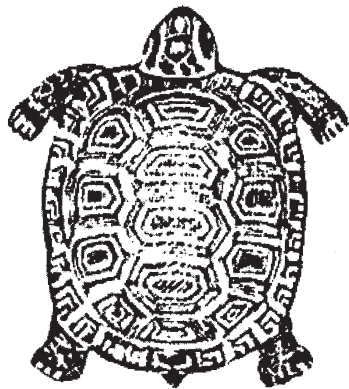


DOIT ETRE REPERCE A LA MAIN 4055/J

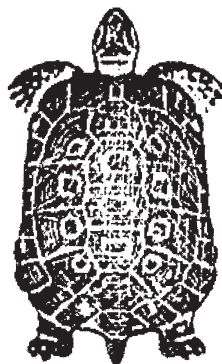
SERPENTS EN PLEIN OU EN CREUX



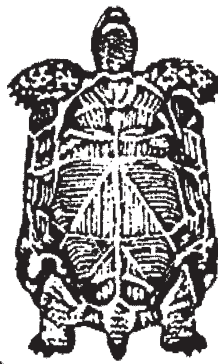
TORTUES EN RELIEF



5974 / J



5975 / J



DESSOUS
5976 / J



5977 / J



DESSOUS
5978 / J



5979

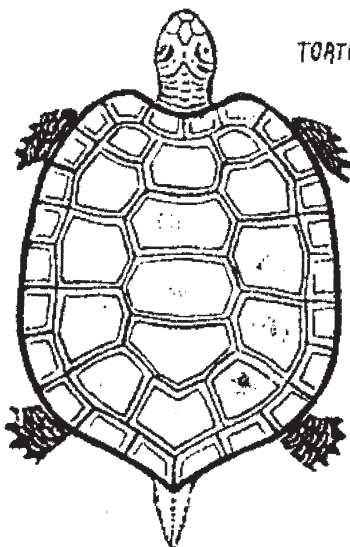


DESSOUS 5980 / J

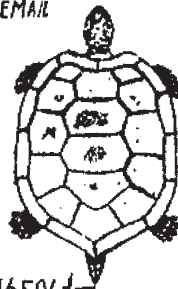


5981 / J

TORTUES POUR EMAIL



16507 / J



16506 / J



8153 / J

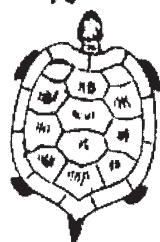
TORTUES p. SIMILIS



18975



18974 / J



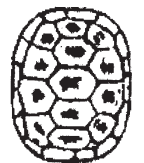
16505 / J



22378 / J



22377 / J



22376 / J



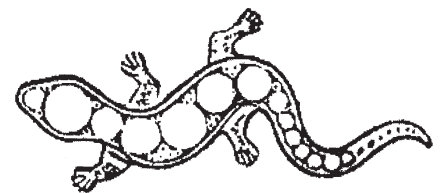
N° 1287 en relief / en relief uni 1288 / J

/ J

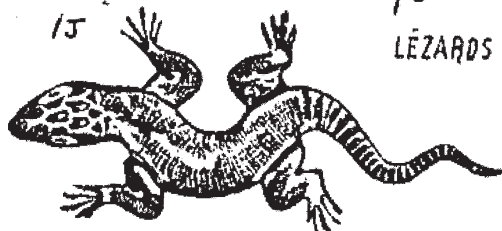
LÉZARDS



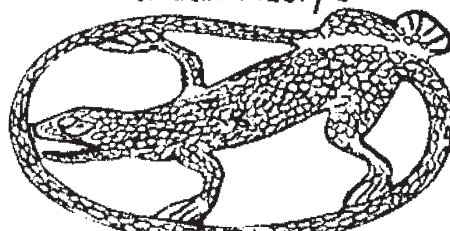
Flon Léopard 1287 / J



Aplat ajouré 713 / J



En relief 12357 / J



Sans relief 4039 / J

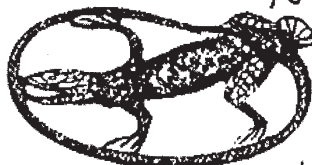
LEZARDS



Pour email et similis 6403 / J



En relief 18678 / J



sans relief 4040 / J



En relief 974 / J



Pour email 10292 / J

TÊTES EN RELIEF



22370 / J



en relief 22371 / J



22368 / J



22369 / J



22372 / J



22373 / J

en relief



1298 / J
tête de chien



1299 / J
tête de chat



1187 / J



1186 / J



5443 / J

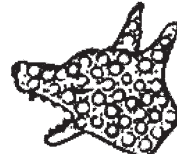


5462 / J



5461 / J

tête de Lapin en relief 1875 / J



7736 / J
Pour similis



7770 / J
Pour similis

têtes de chien en relief

5462

en relief



1900 / J



1901 / J



5447 / J



5448 / J



5449 / J



5450 / J



5451 / J



5452 / J



J/1184 droite



J/1185 gauche



en relief 21412 / J

têtes de Bacchus en relief



9277 / J



9276 / J



9275 / J



5458 / J



5486 / J

J/22366
tête avec peu de relief
à repercer à la main



en relief 9281 / J



J/9280

ANIMAUX avec PEU de RELIEF



4135/J



4136/J



4137/J



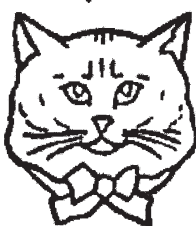
4138/J



4145/J



4144/J



pour émail 4146/J



4176/J



4177/J



4181/J



4152/J



4153/J



Pour émail 4154/J



4139/J



4140/J



4141/J



4142/J



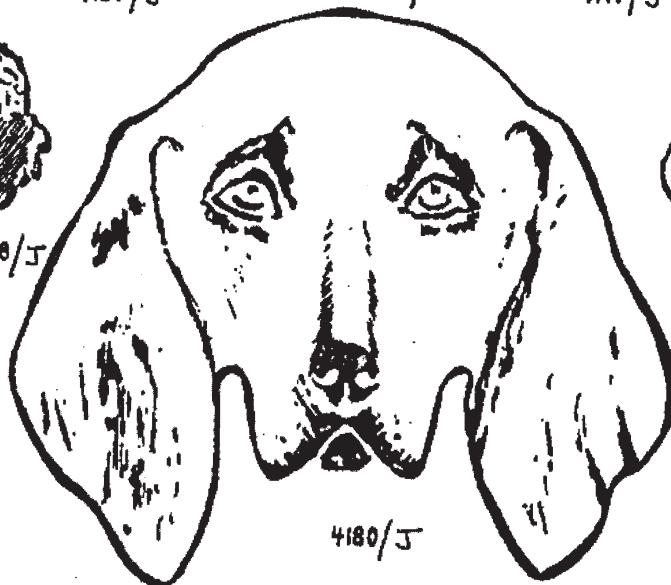
4143/J



4147/J



4148/J



4180/J



4179/J



4179 bis/J



4149/J



Pour émail 4155/J



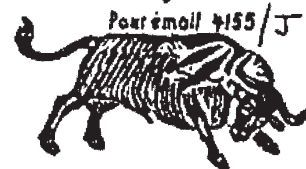
4151/J



4150/J



4183/J



4184/J



4188/J



4187/J



repr. interdite 4186/J



4182/J



4178/J

TETES EN RELIEF



16494/5



16493/5



16492/5



16491/5



5455/5



5456/5



5457/5



1889/5



1890/5



16502/5



16501/5



16500/5



5454/5



1045/5



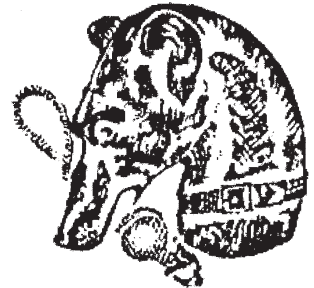
1312/5



16503/5



16504/5



1313/5



1310/5



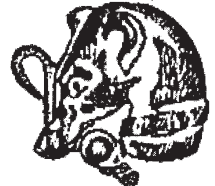
16528/5



1296/5



16531/5



1311/5



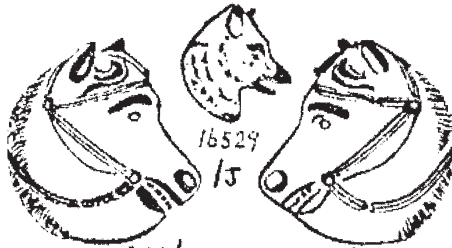
7771/5 p. similis



5453/5



1295/5



16529/5



16530/5



1306/5



1304/5



1302/5



1303/5



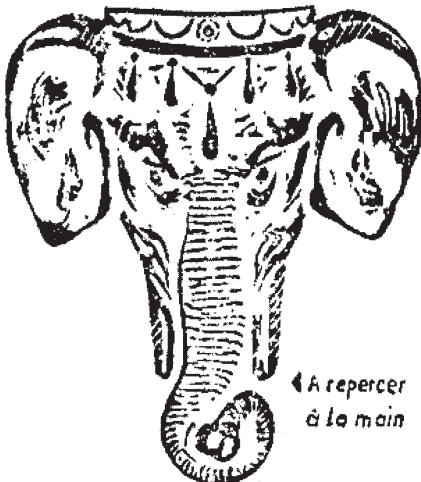
1306/5



1307/5

Têtes d'éléphant en relief

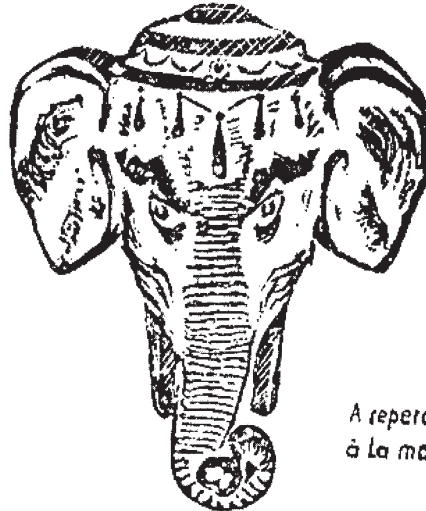
ELEPHANTS / SINGES



5963 BIS / J

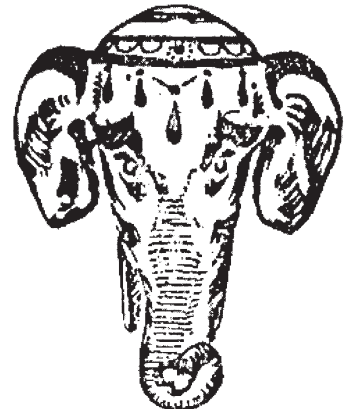
← A repercer à la main

EN RELIEF



5963 / J

A repercer à la main



5964 / J

EN RELIEF



5969 / J
EN RELIEF



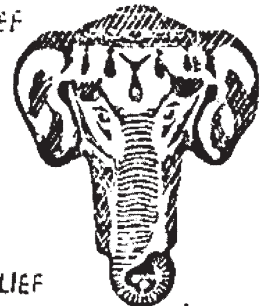
5968 / J



5967 / J



5966 / J



EN RELIEF

5965 / J



5970 DROITE / J

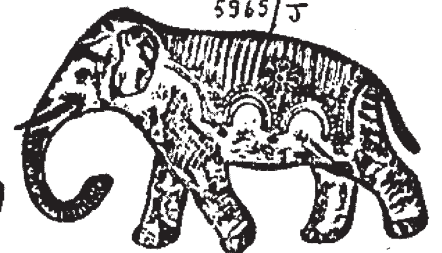


22507 / J
pour similis

à repercer à la main



22365 / J

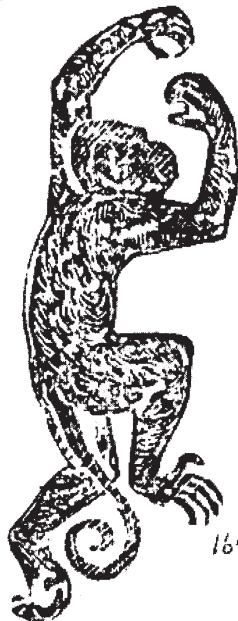


5970 GAUCHE en découpé 222 / J



5971 DROITE / J

SINGES
en relief



16499 / J



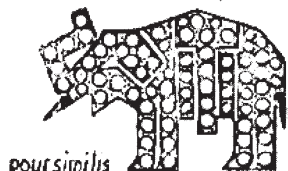
16498



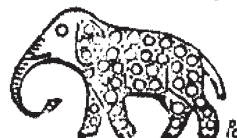
16497



5971 GAUCHE / J



pour similis
Eléphant sans relief 21042 / J



pour similis
Eléphant sans relief 7733 / J



15869 / J

Pour similis



7745 / J



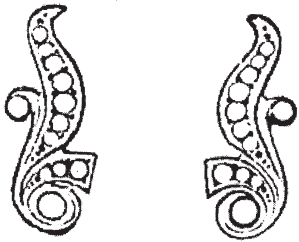
RELIEF 1824 / J



11750 avec emplacement
pour pierre ou émail
/ J



15868 / J



18.806 / J
En 1/2 plein pour similis



18.807 / J



19.295 / J
En 1/2 plein pr. similis



19.296 / J
En 1/2 plein Uni



18.804 / J



18.805 / J
En plein, Unis



19.834 / J
En 1/2 plein, Unis



19.835 / J



19.832 / J
En 1/2 plein, Unis



19.833 / J



J/19.838



19.839 / J
En 1/2 plein, Unis



19.840 / J
En 1/2 plein, Unis



19.841 / J



19.830 / J
En 1/2 plein, Unis



19.831 / J



J/19.836



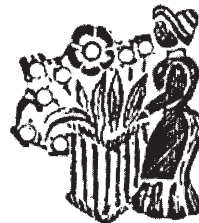
19.837 / J
En 1/2 plein, Unis



19.185 / J
En 1/2 plein



19.317 / J
En 1/2 plein



19.680 / J
En 1/2 plein
pour similis



18.962 / J
En 1/2 plein



19.197 / J
En 1/2 plein



18.972 / J
En 1/2 plein



19.318 / J
En 1/2 plein



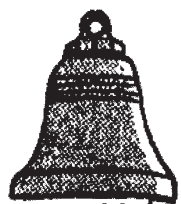
J / 18.971 En 1/2 plein



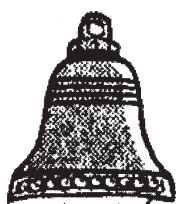
J / 19.241
En 1/2 plein



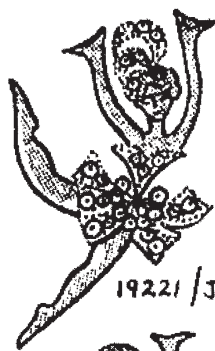
J / 19.686
En 1/2 plein
pour similis



19188 / J



19028 / J



19221 / J



J / 19223



19171 / J



19172 / J



19187 / J



19027 / J



19167 / J



19166 / J



J / 19186



19026 / J



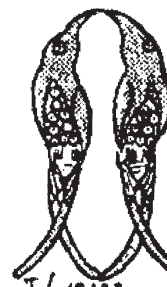
J / 19241



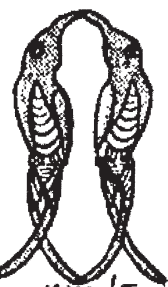
J / 19222



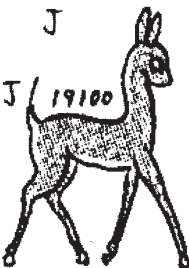
19224 / J



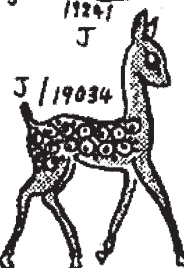
J / 19192



19199 / J



J / 19100



J / 19034



19132 / J

J / 18951

J / 18950



J / 19137



J / 19139



J / 19197



18962 / J



19185 / J



J / 19113



J / 19099



J / 19033



19141 / J



19140 / J



J / 19114



J / 18872



J / 19225



19226 / J



J / 19095



J / 19097



19098 / J



19147 / J



18824 / J



19146 / J



J / 19094



J / 19093



J / 18871



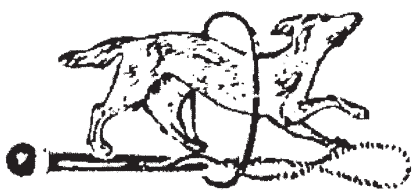
J / 18870



J / 18869

J

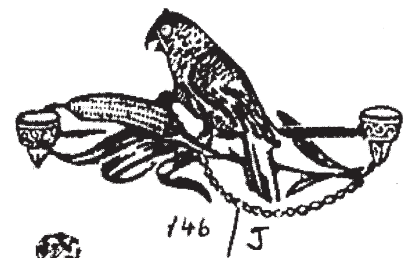
MOTIFS DIVERS



743 / J



18815 / J



146 / J



5430 / J



1777 / J



2277 / J



846 / J



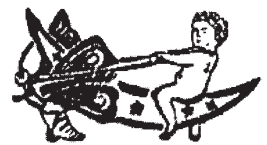
2278 / J



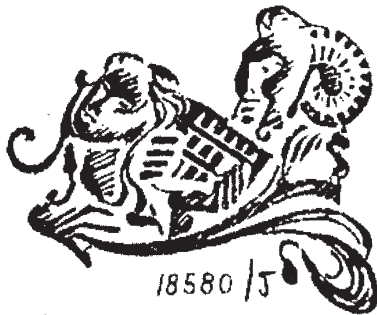
18816 / J



5431 / J



5432 / J



18580 / J



18697 / J



18699 / J



18700 / J



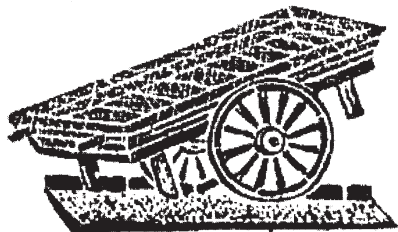
1772 / J



1864 / J



17671 / J



1771 / J



311 bis en relief / J



18581 / J



311 en relief / J



1782 / J



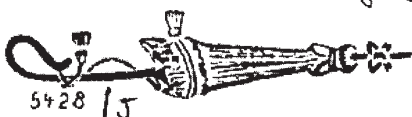
1780 / J



11080 / J



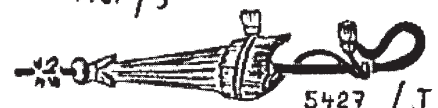
1781 / J



5428 / J



5422 / J



5427 / J

SUJETS DIVERS



15845 / J



15846 / J



15847 / J



15848 / J



15849 / J



15844 / J



15851 / J



15852 / J



15853 / J



15854 / J



15855 / J



15856 / J



15857 / J



15858 / J



15860 / J



15861 / J



15862 / J



15863 / J



15864 / J



15865 / J



15888 / J



15889 / J



15890 / J



15859 / J



15866 / J



15867 / J



J/11054



11055 / J



11056 / J



15887



J/11053



11058 / J



J/11059



11060 / J

J/11052

11049 / J

11046 / J

11051 / J

sans anneau
J/11050

11047 / J



J/15899



15908 / J



15900 / J



15901 / J



15902 / J



21430 / J



5472 / J



5471 / J



5469 / J



5470 / J



5468 / J



5497 / J



5498 / J



5488 / J



5487 / J



5489 / J



5500 / J



5501 / J



5504 / J



5499



J/5502



an relief
J/5473



22498 / J
pour similis sans relief



an relief
22361 / J



5476 / J



5503 / J



J/12489



J/5936



J/5937



J/5998



J/1506



J/10288



J/3845 sans relief



5491 / J



5492 / J



J/5493



J/5494



J/5495



5496 / J



J/5433



5434 / J



5435 / J



5496 / J



J/5504



J/5506



J/5507



J/5508



J/5509



J/5510



J/5480



J/5481



J/5482



5437 / J



5438 / J



5485 / J



5484 / J



5483 / J

Raie



J. 26.000

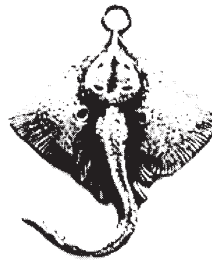


J. 26.001



J. 26.002

En plein, avec ou sans bélière



J. 25.922

En creux ou en 1/2 plein



J. 25.923



J. 25.924



J. 25.925

En creux ou en plein

Bar

Avec ou sans anneau



J. 26.066

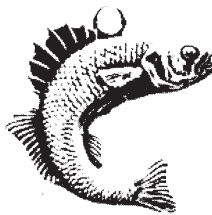


J. 26.067



J. 26.068

En plein, avec ou sans bélière



J. 25.934

En creux ou en 1/2 plein



J. 25.935



J. 25.936

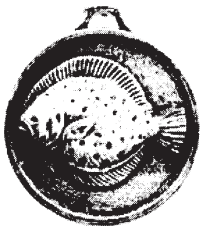


J. 25.937

En creux ou en plein

Turbot

Avec ou sans anneau



J. 26.063

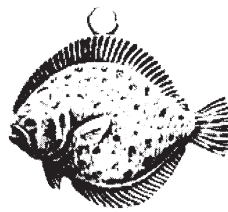


J. 26.064



J. 26.065

En plein, avec ou sans bélière



J. 25.938

En creux ou en 1/2 plein



J. 25.939



J. 25.940

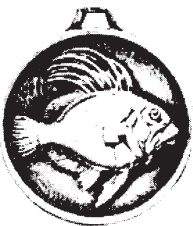


J. 25.941

En creux ou en plein

Saint-Pierre

Avec ou sans anneau



J. 26.452

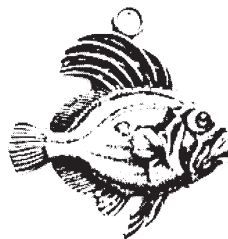


J. 26.453



J. 26.454

En plein, avec ou sans bélière



J. 25.930

En creux ou en 1/2 plein



J. 25.931



J. 25.932

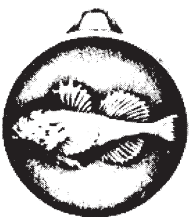


J. 25.933

En creux ou en plein

Chabot de Mer

Avec ou sans anneau



J. 26.167



J. 26.168



J. 26.169

En plein, avec ou sans bélière



J. 25.950

En creux ou en 1/2 plein



J. 25.951



J. 25.952



J. 25.953

En creux ou en plein

Avec ou sans anneau