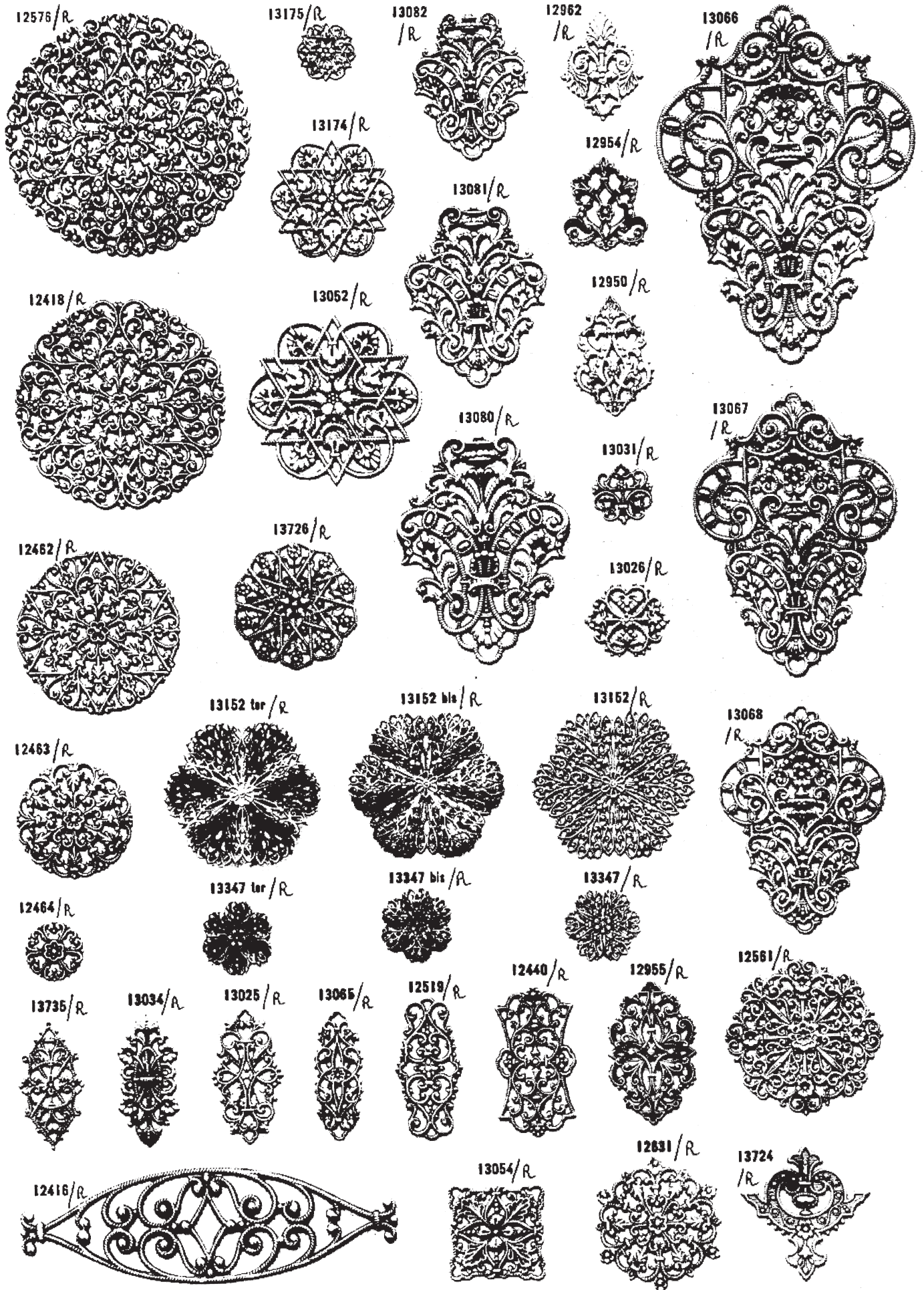




La série se fait gaufrée, les numéros doivent être suivis alors de Bis



12982/R



12922/R



13020/R



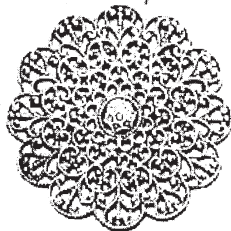
13036/R



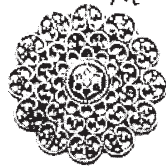
12986/R



13156/R



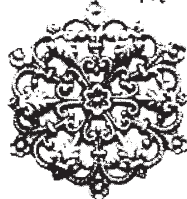
13349/R



13350/R



12631 bis/R



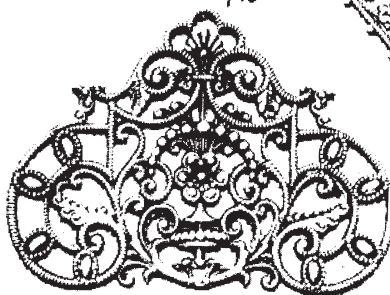
13085/R



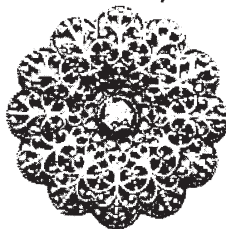
13084/R



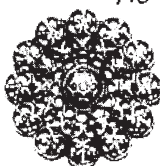
13083/R



13156 A/R



13349 A/R



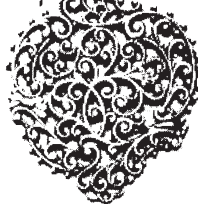
13350 A/R



13054 bis/R



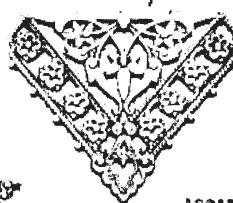
13749/R



13743/R



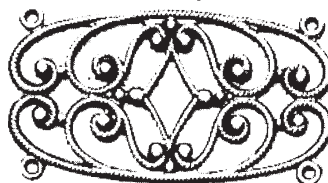
13725/R



13017/R

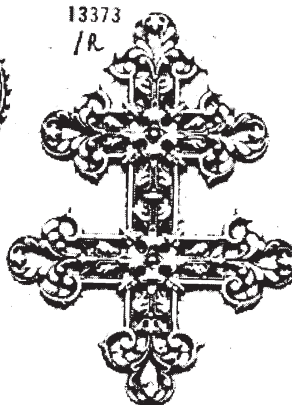


16912/R



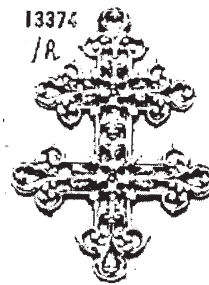
13373

/R



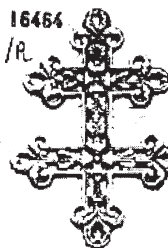
13374

/R



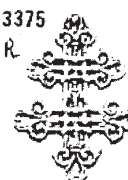
16464

/R



13375

/R



13376

/R



16472

/R



12301/R



12659

/R



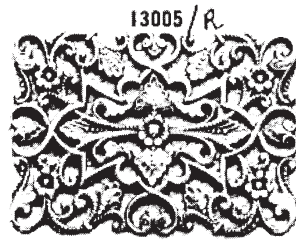
— La série se fait gaufrée, les numéros doivent être suivis alors de Bis —



13056/R



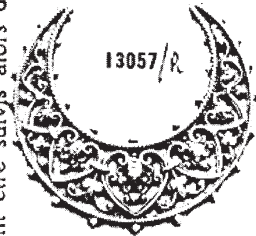
12995/R



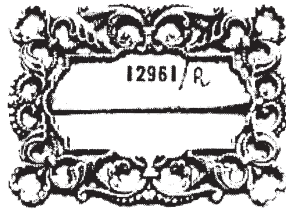
13005/R



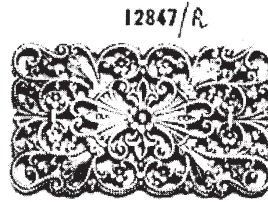
12966/R gaufré 12966 bis/R



13057/R



12961/R



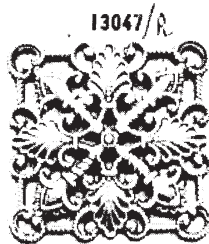
12847/R



13058/R



12908/R



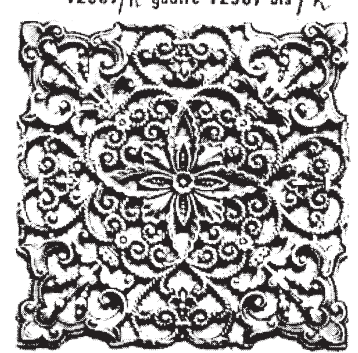
13047/R



13042/R



13003/R



12967/R gaufré 12967 bis/R



13059/R



13040/R



12981/R



12951/R



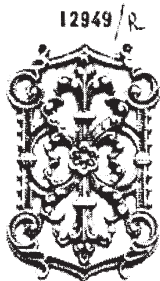
13053/R



12715/R gaufré 12715 bis/R



12531/R



12949/R



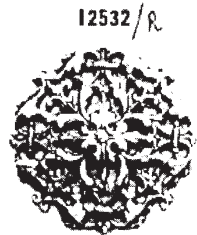
13004/R



12538/R



13043/R



12532/R



12510/R



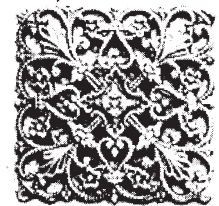
12522/R



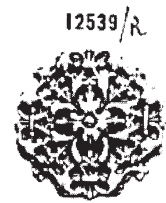
12528/R



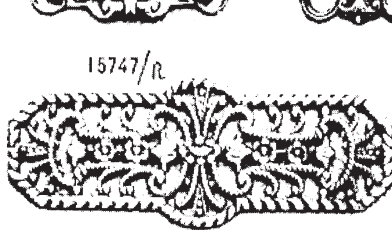
12378/R



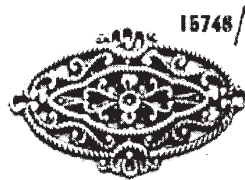
12940/R gaufré 12940 bis/R



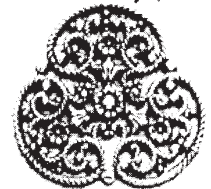
12539/R



15747/R



15748/R



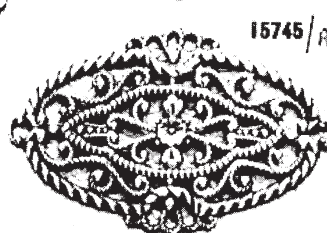
15744/R



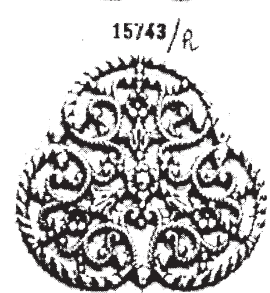
12540/R



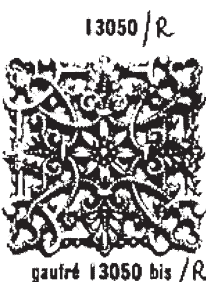
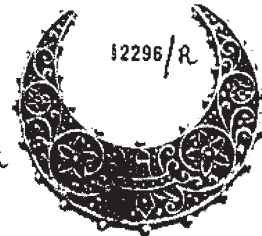
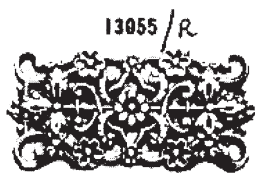
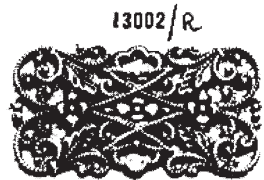
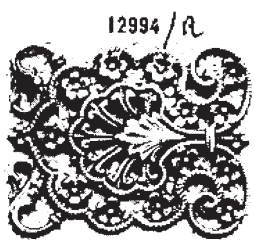
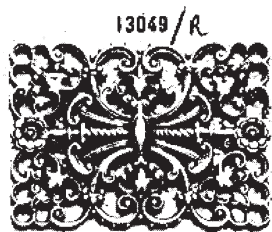
15748/R



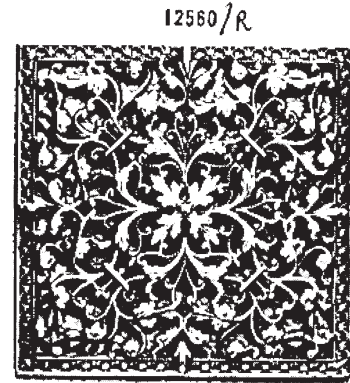
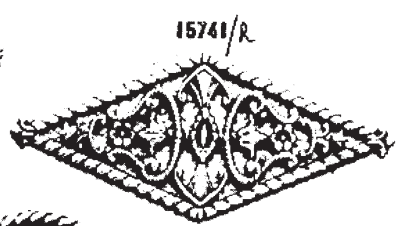
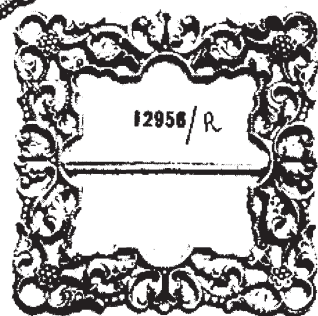
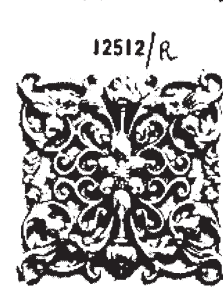
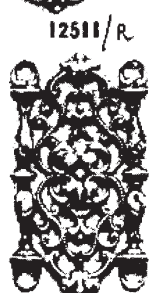
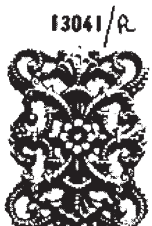
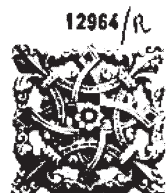
15745/R

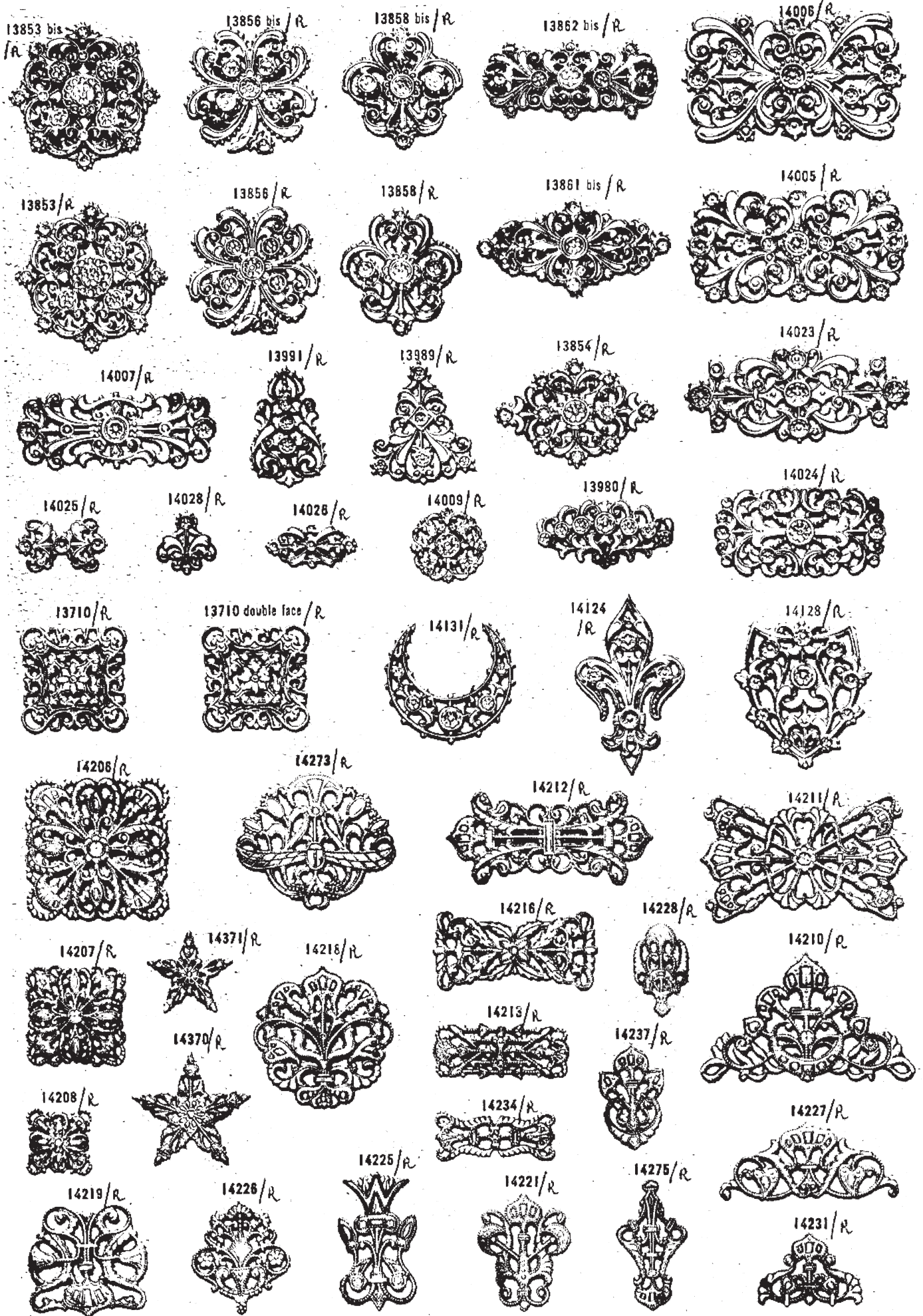


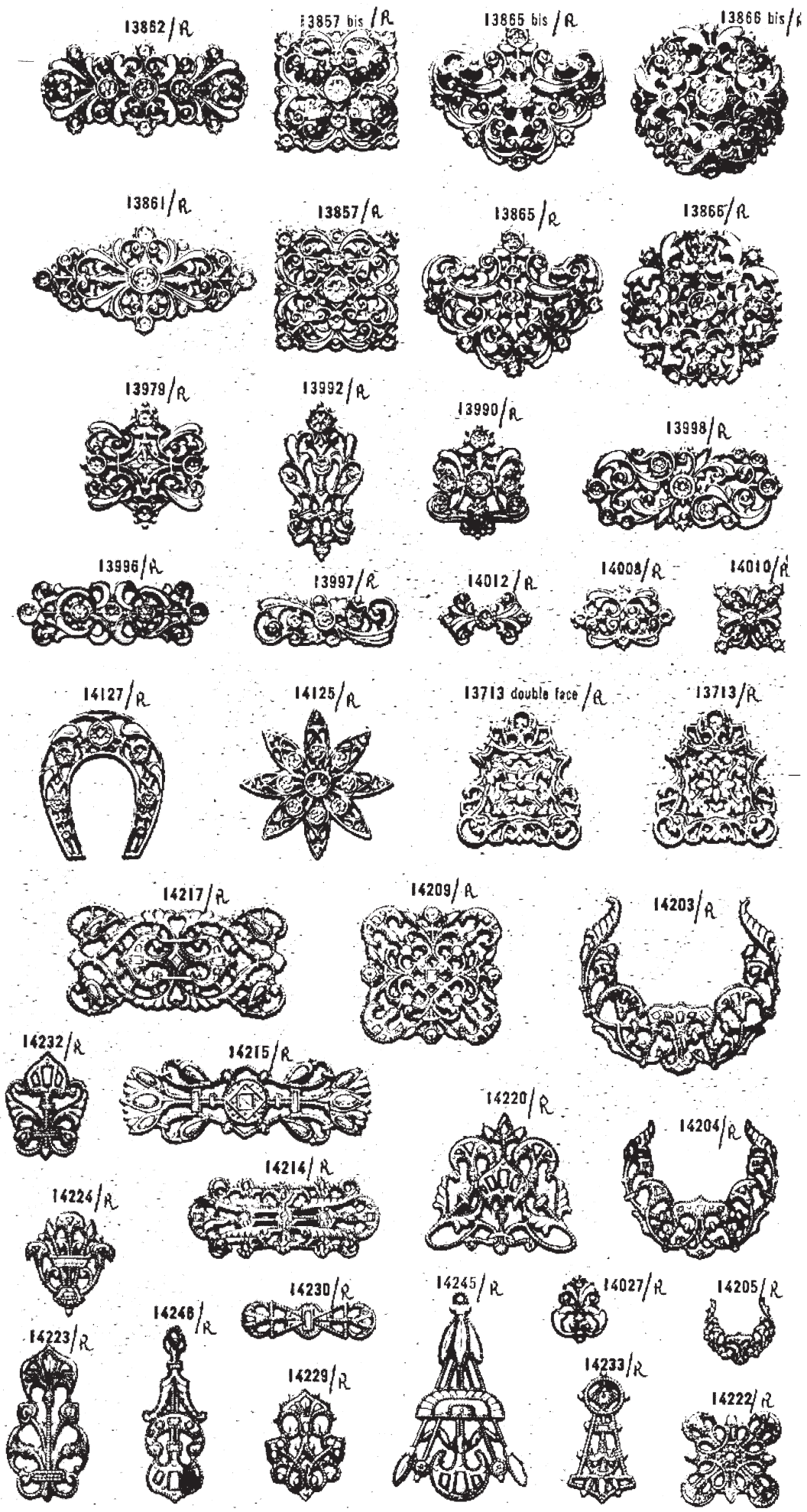
15743/R

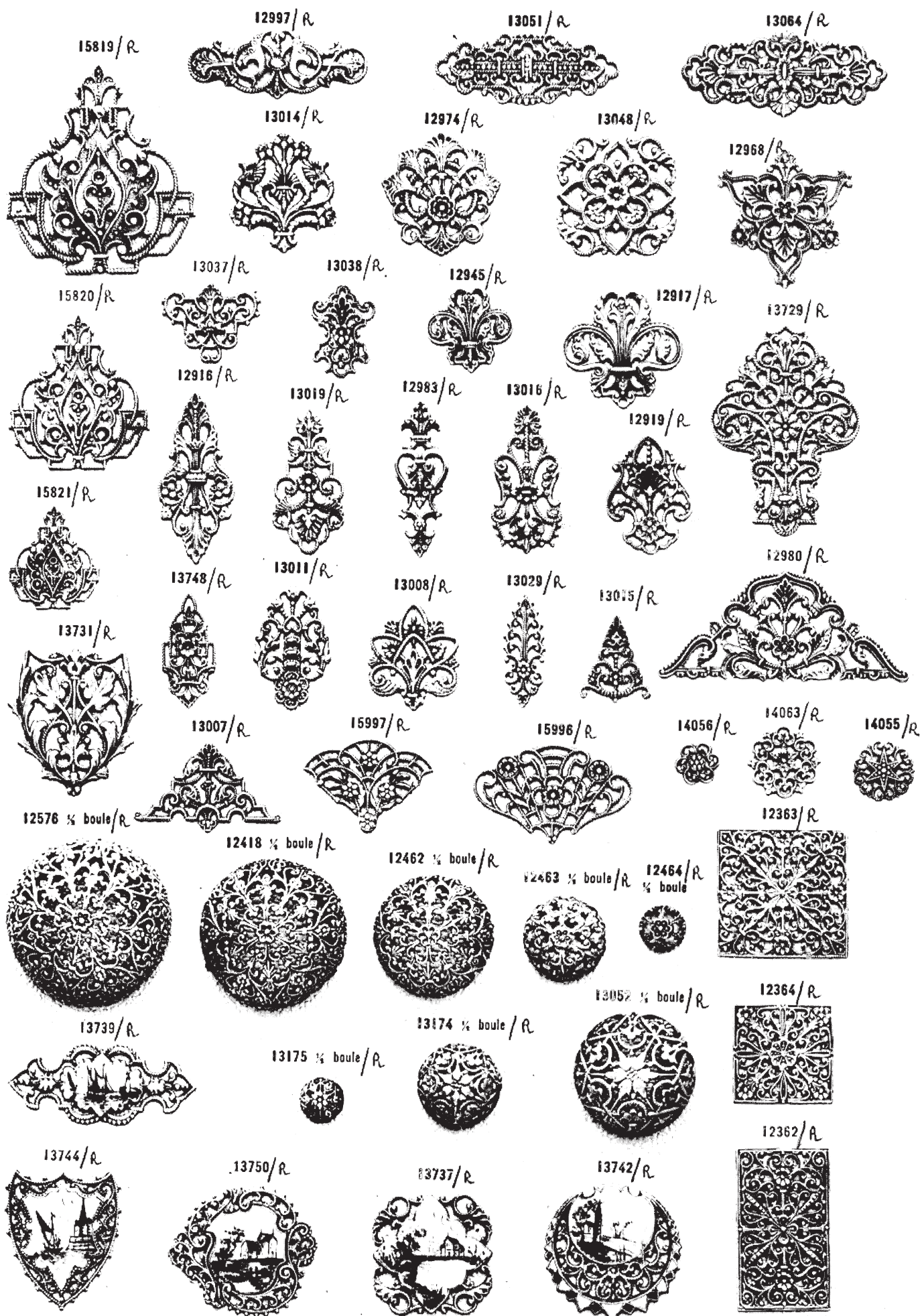


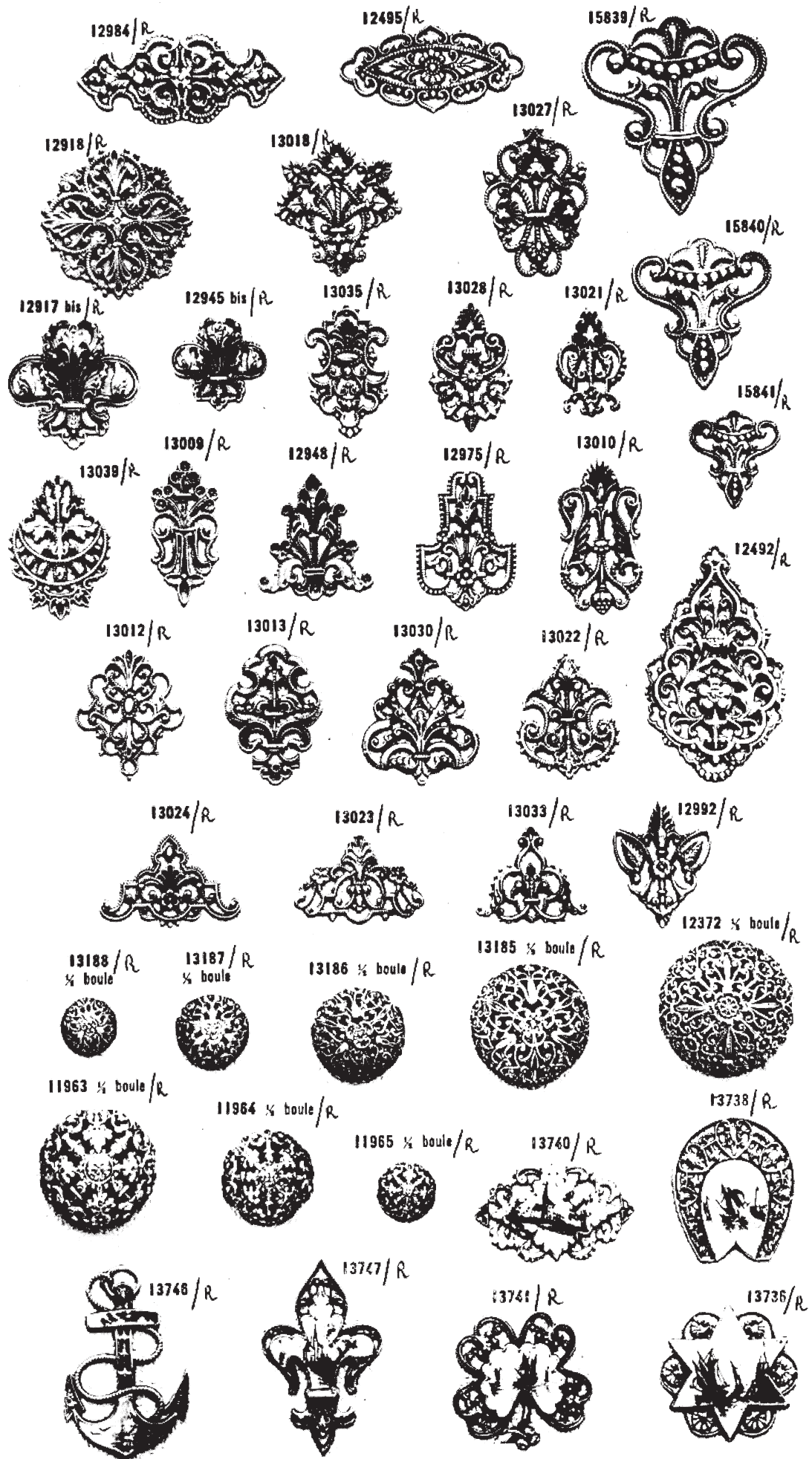
gaufre 13050 bis/R

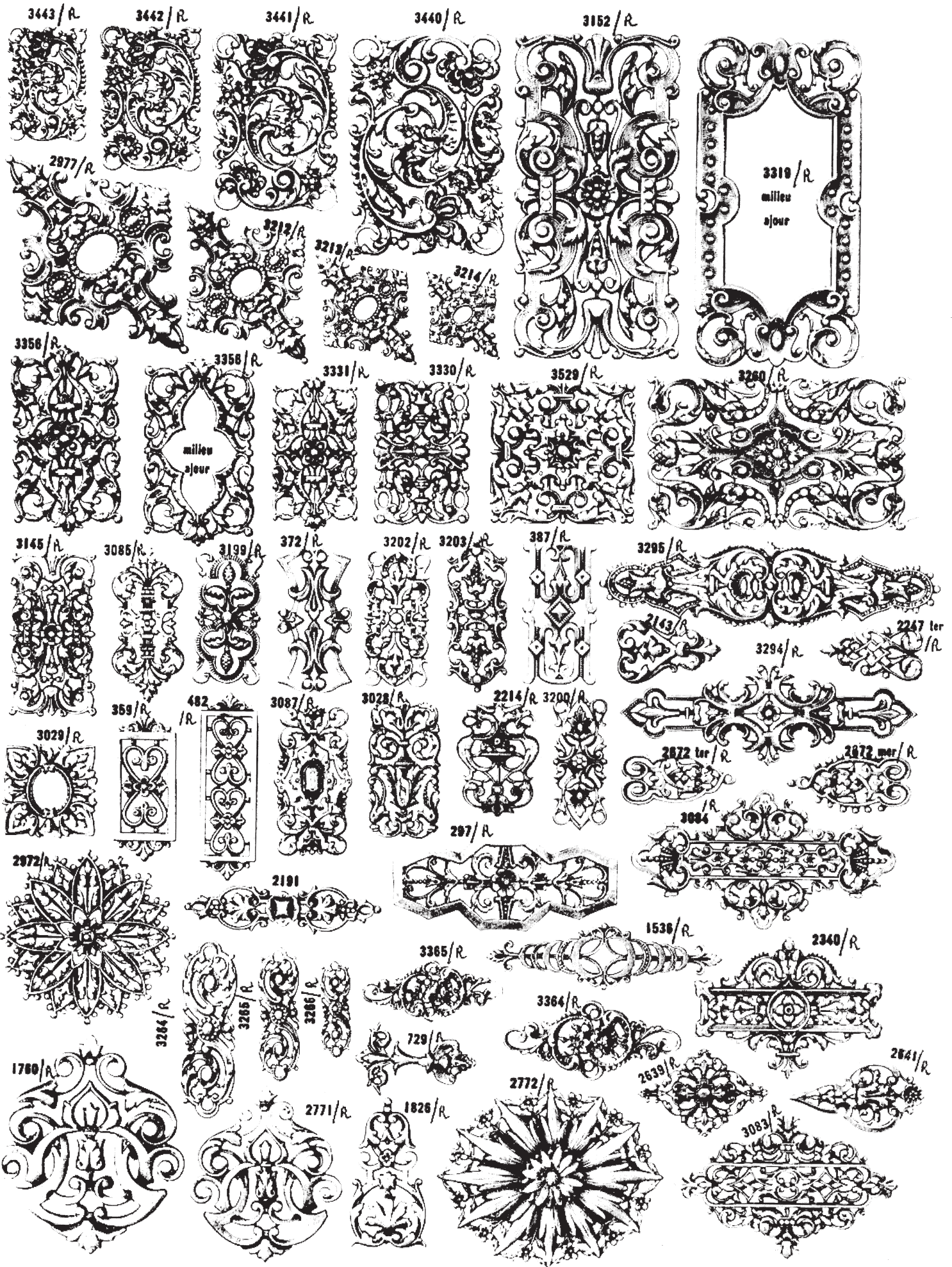


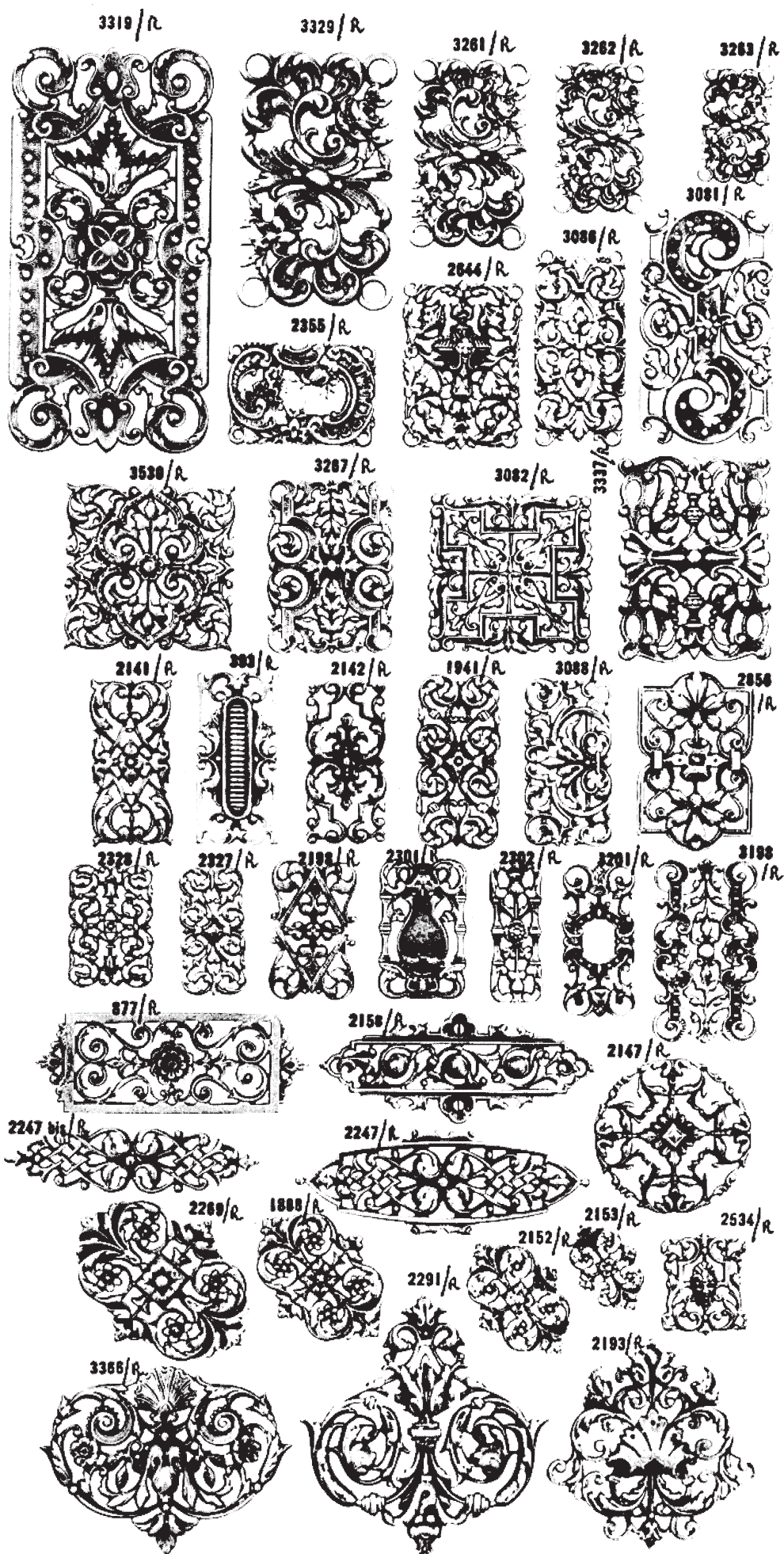


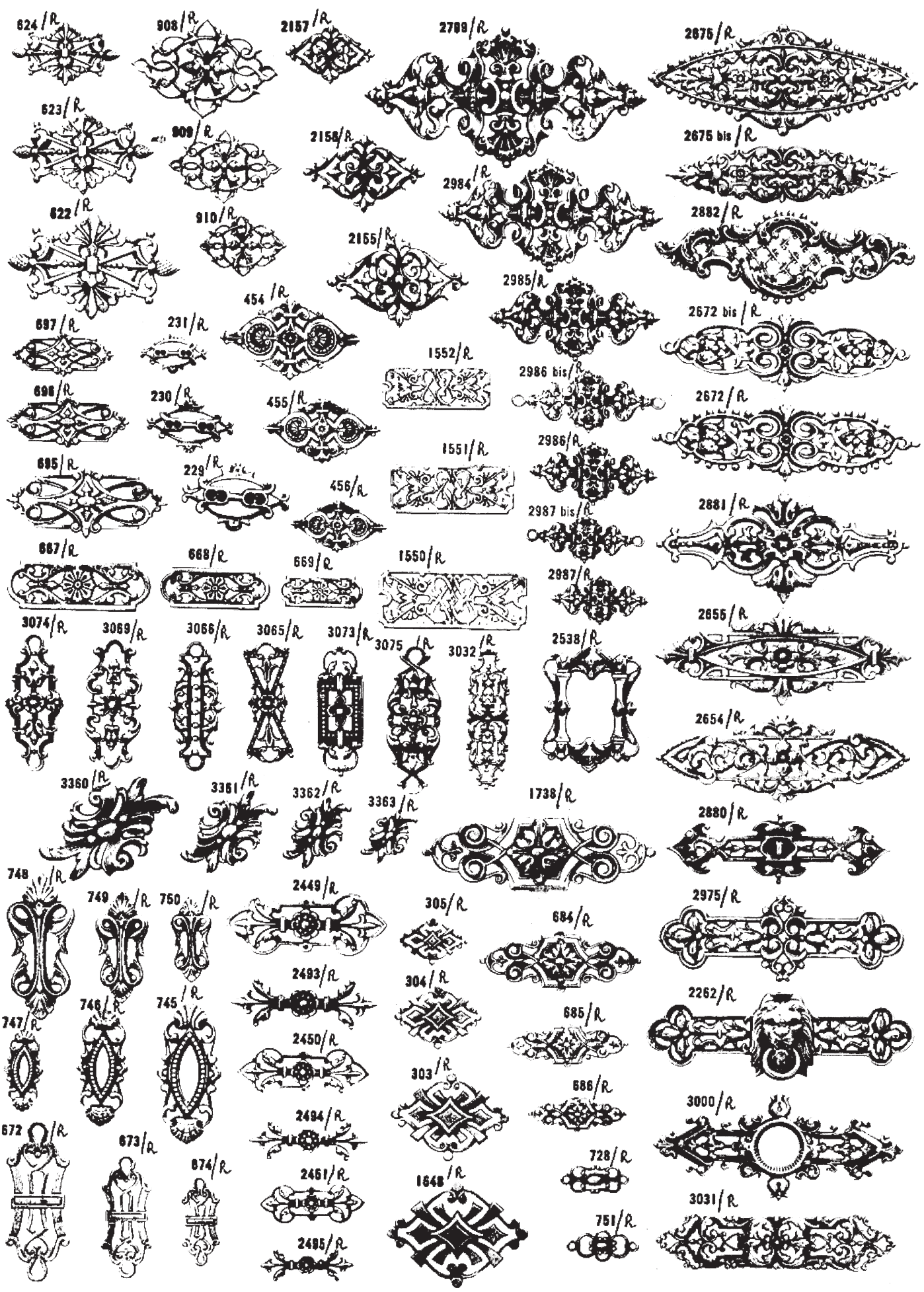


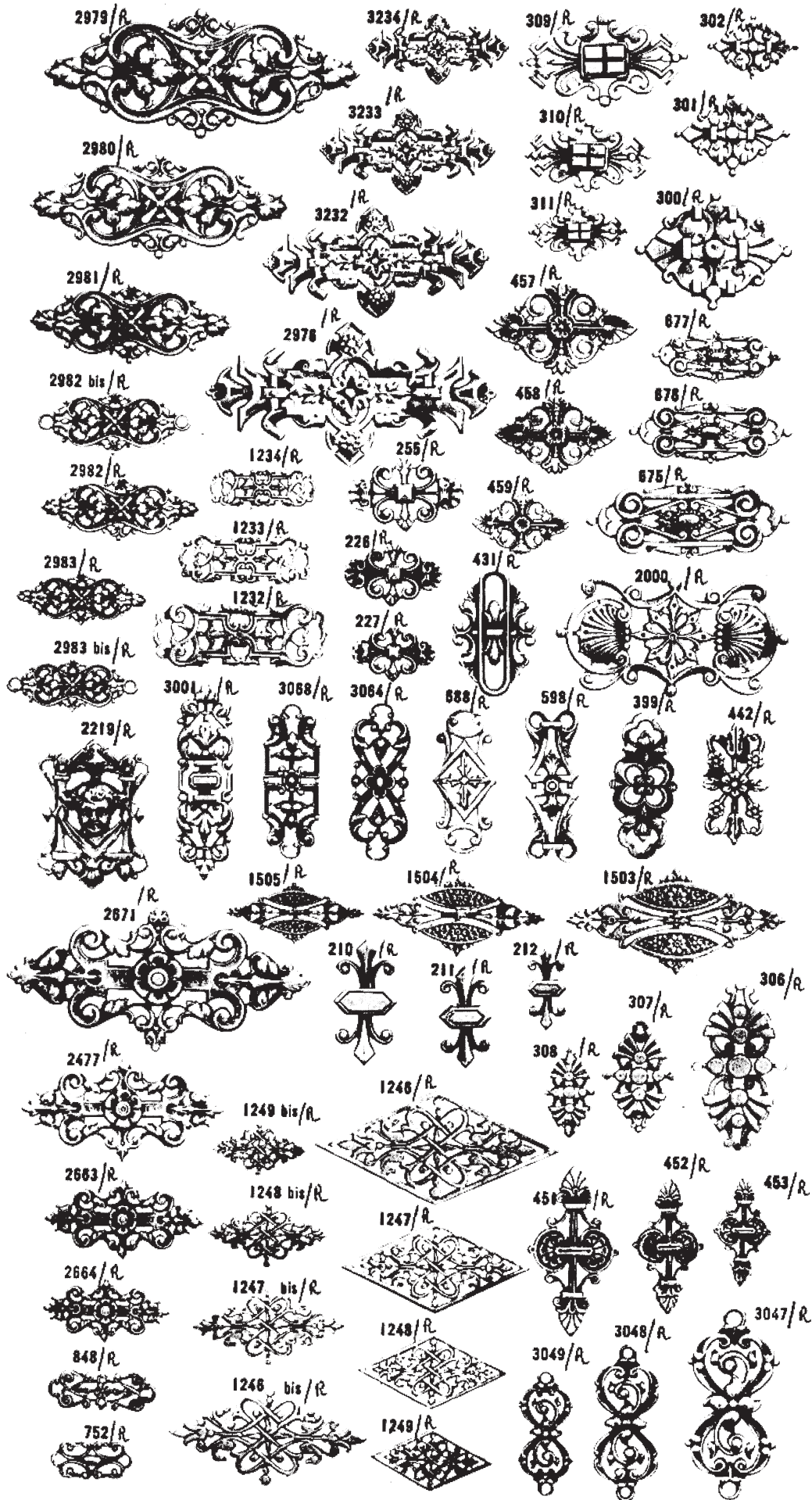








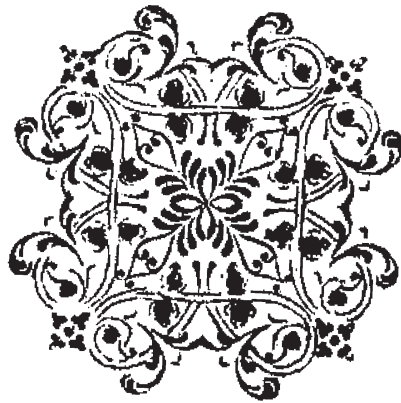




FILIGRANES



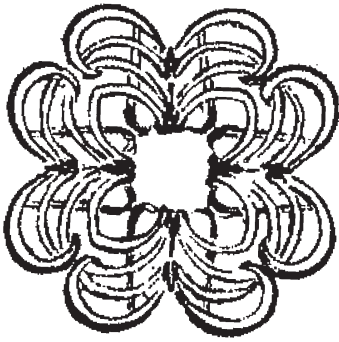
2665 / J
Emb. en 1/2 boule:
2666 / J



Embouti: 3141 / J
Autre emb. 3142



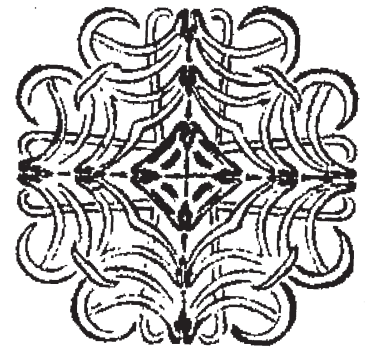
2660
Embouti: 2661 / J
Emb. sans ajours: 2662



3040
Embouti 3041 / J



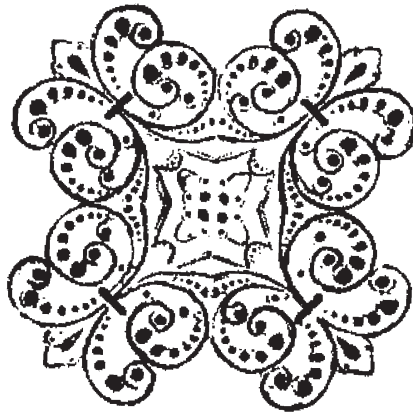
2886
Embouti: 2896 / J



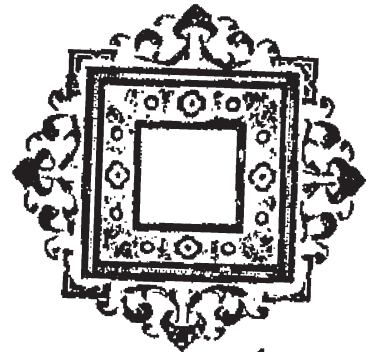
3036
Embouti 3037 / J



J/2347. Embouti: 2348 / J



2930
Emboutis: 2931, 2932 / J



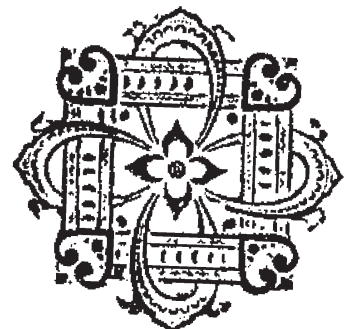
2369 / J



2339 / J
Emboutis: 2340, 2341 / J
2342 / J

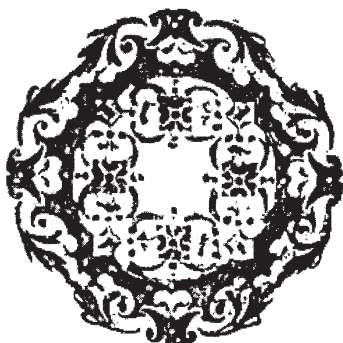


2553
Embouti: 2552 / J



2350
Embouti: 2349 / J

FILIGRANES



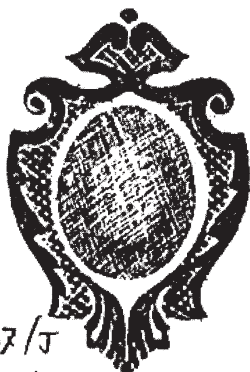
2970
Embouti: 2971 / J



2974
Embouti: 2975 / J



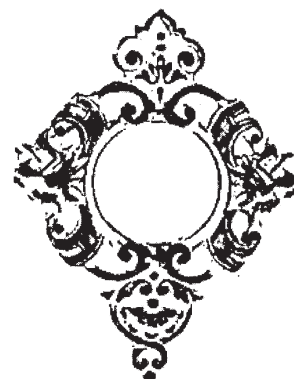
2972
Embouti: 2973 / J



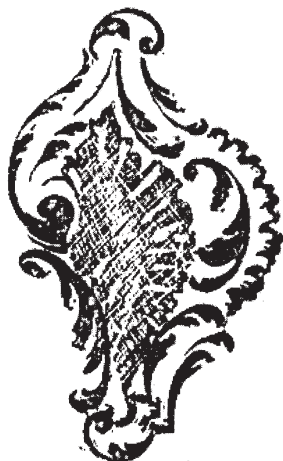
1457 / J
Bombé sans ajours



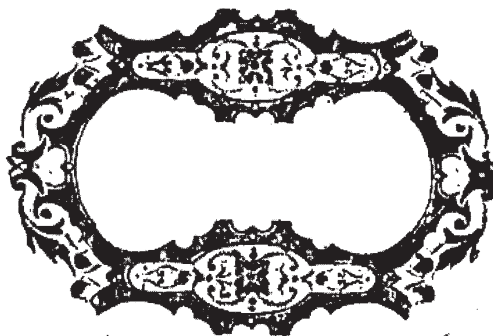
2966
Embouti: 2969 / J



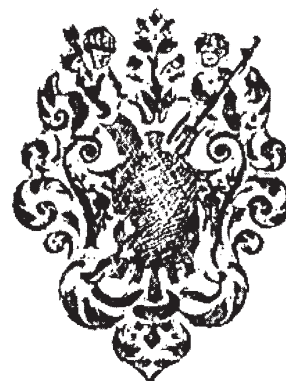
2397 / J



2383 / J



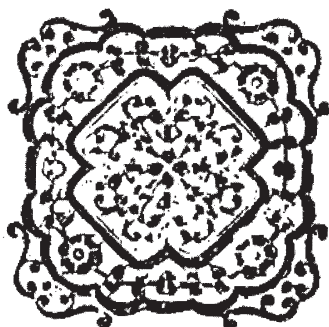
J / 2967 - Embouti: 2968 / J



2412 / J



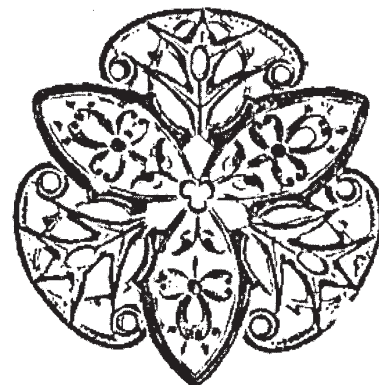
2388 / J Centre plein 2389 / J Centre ajouré



Emboutis: 3098 - 3099 / J



J / 3097 Embouti



2831 J
Embouti: 2832 J

FILIGRANES



10.932 / J



10.930 / J



10.931 / J



10.924 / J



10.926 / J



10.925 / J



10.927 / J



10.929 / J



10.928 / J



10.935 / J



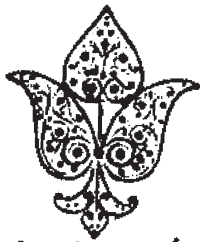
10.933 / J



10.934 / J

FILIGRANES

Toutes les pièces ci-dessous sont ajourées en creux ou 1/2 plein



9441 emb. 9442 / J



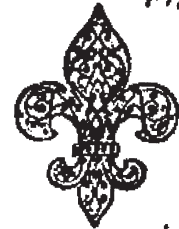
9496 / J Uni



9530 / J



9495 J Granité



9449 Em. 9450 / J



9439 Emb. 9440 / J



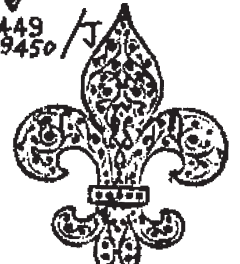
9443 Em. 9444 / J



9531 / J



9451 Em. 9452 / J



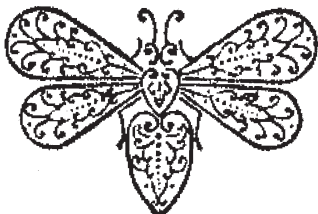
J / 9447 Em. 9448 / J



9445 Em. 9446 / J



9453 Em. 9454 / J



9465 Emb. 9466 / J



9455 Em. 9456 / J



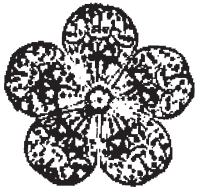
9463 Em. 9464 / J



9459 Em. 9460 / J



9457 Em. 9458 / J



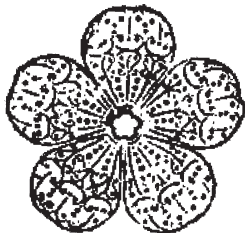
9473 Em. 9474 / J



9461 Em. 9462 / J



9469 Em. 9470 / J



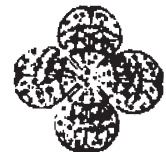
9475 Em. 9476 / J



9471 Em. 9472 / J



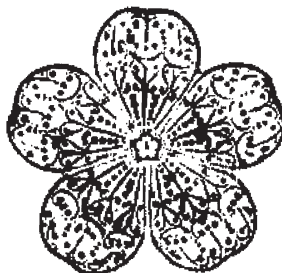
9497 / J



9467 Em. 9468 / J



9479 / J



9477 Em. 9478 / J



9481 / J



9489 / J



9483 / J



9488 / J



9480 / J

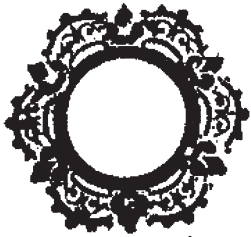


9484 / J



9482 / J

TOUTES LES PIÈCES CI-DESSOUS
SONT EN CREUX OU EN 1/2 PLEIN



13.459 / J

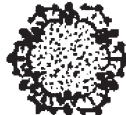


13.458 / J

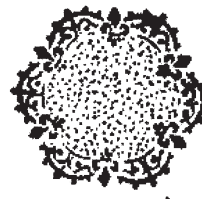
Centre ajouré
et entourage Filigrané



13.457 / J

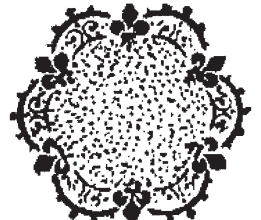


13.448 / J



13.449 / J

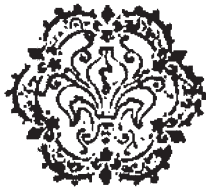
Centre plein
et entourage Filigrané



13.450 / J



*13.456 / J



*13.455 / J

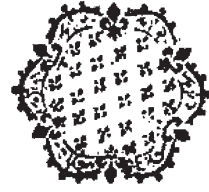


*13.454 / J

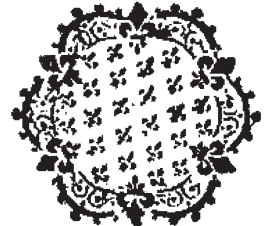


*13.451 / J

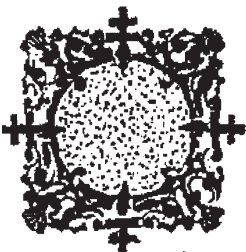
*Entourage Filigrané



*13.452 / J



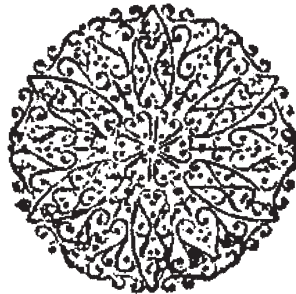
*13.453 / J



13.433 / J
Centre plein
13.436 / J
Centre ajouré



13.445 / J
Centre plein

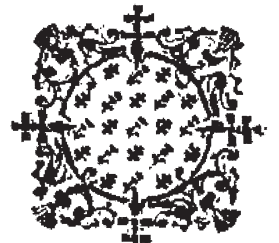


13.460 / J

Emb. en 1/2 boule : 13.461
Filigrane entièrement
ajouré



13.444 / J
Centre plein
entourage
ajouré



13.434 / J
Centre plein
entourage
ajouré



13.484 / J
Filigrane
ajouré



13.483 / J
Filigrane
ajouré



13.482 / J
Filigrane
ajouré



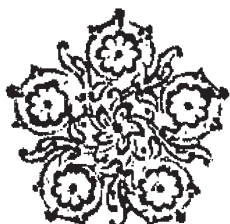
13.481 / J
Filigrane
ajouré



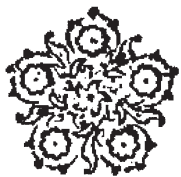
13.470 / J
Emb. 13.462
Filigrane
ajouré



13.471 / J
Emb. 13.463
Filigrane
ajouré



13.476 / J
Ajouré
Fleurette percée:
13.480 / J



13.475 / J
Ajouré
Fleurette percée:
13.479 / J



13.474 / J
Ajouré
Fleurette percée:
13.478 / J



13.473 / J
Ajouré
Fleurette percée:
13.477 / J

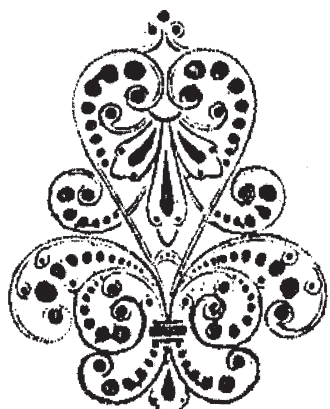


13.465 / J
Filigrane
ajouré
Emb. : 13.466 / J

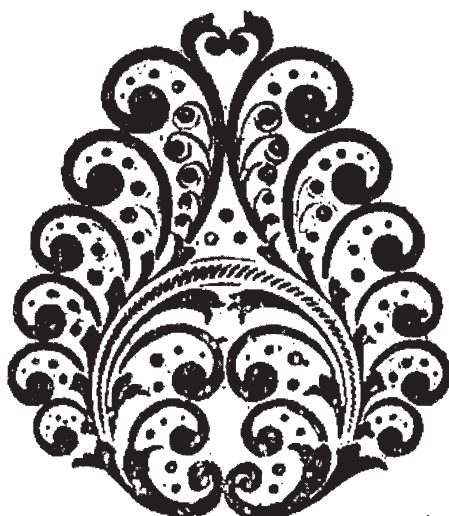


13.472 / J
Filigrane
ajouré
Emb. 13.464 / J

FILIGRANES



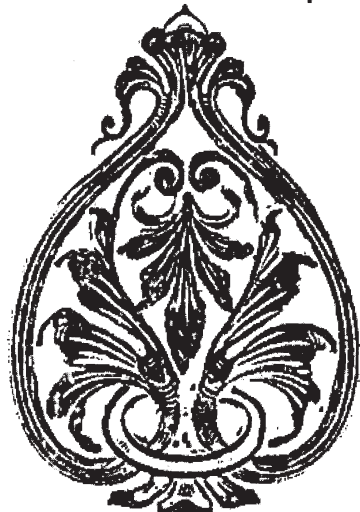
2921
Embouti: 2922 / J



2524
Emboutis: 2525-2526 / J



2321
Emb. 2322-2323 / J



10524 / J
Embouti



2856
Embouti: 2857 / J



2150 / J
Embouti: 2150 bis / J



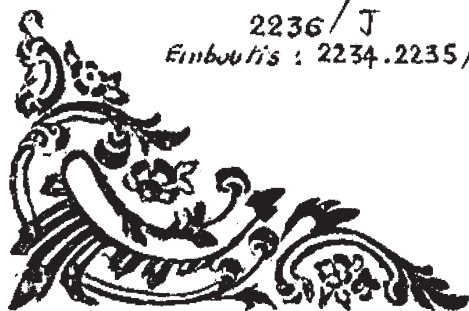
2236 / J
Emboutis: 2234-2235 / J



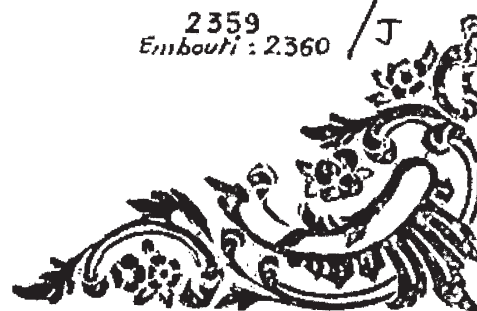
2359
Embouti: 2360 / J



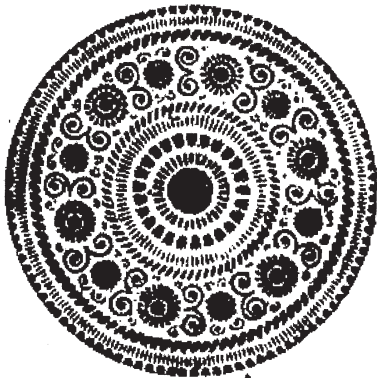
3010 / J



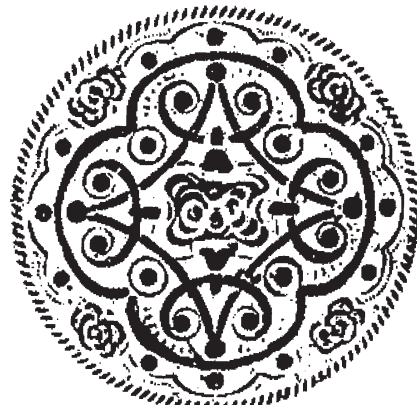
1883 / J



1884 / J



18.329 / 5
Sans ajours
en 1/2 plein



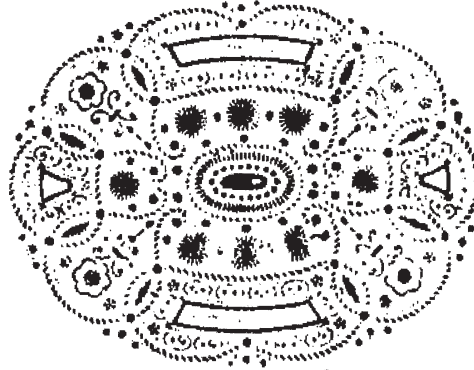
23.189 / 5
Sans ajours
en 1/2 plein



4281 / 5
Sans ajours
en plein
ou 1/2 plein



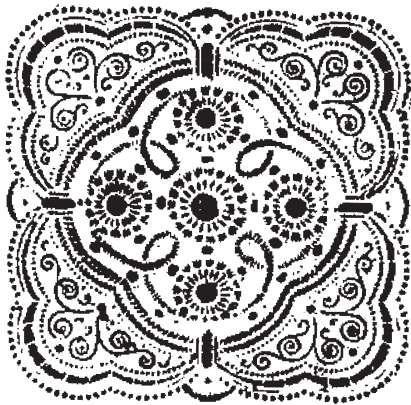
18.328 / 5
Sans ajours
en 1/2 plein



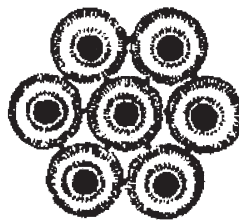
23.228 / 5
Centre avec ajours
en 1/2 plein



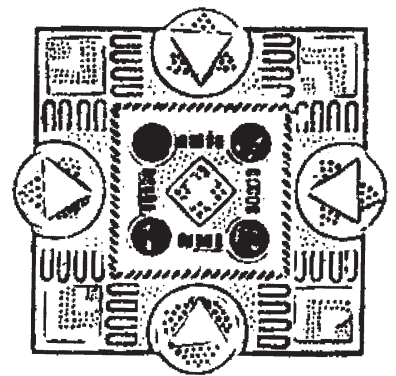
4284 / 5
Sans ajours
en plein
ou 1/2 plein



23.190 / 5
Centre avec ajours
en 1/2 plein



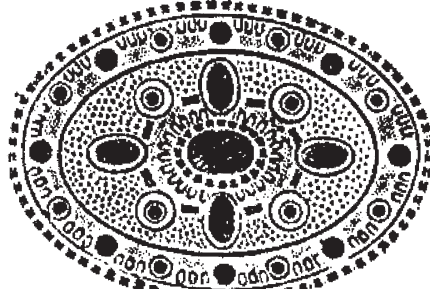
3.756 / 5
En 1/2 plein et
en relief



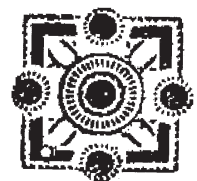
4279 / 5
Sans ajours
en plein
ou 1/2 plein



4278 / 5
En 1/2 plein
Sans ajours



4282 / 5
Sans ajours
en plein ou 1/2 plein



4272 / 5
En 1/2 plein
Sans ajours



4.269 / 5
Sans ajours



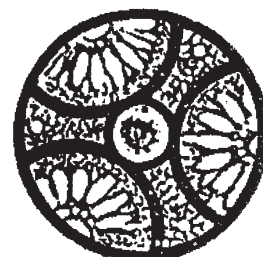
4.266 / 5
Sans ajours



4.268 / 5
Sans ajours



4.267 / 5
Sans ajours



4.285 / 5
Sans ajours



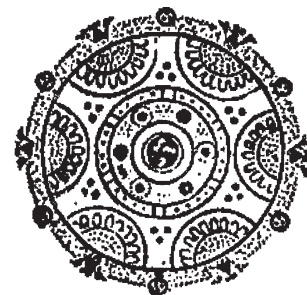
4.277 / 5



4.276 / 5
Sans ajours



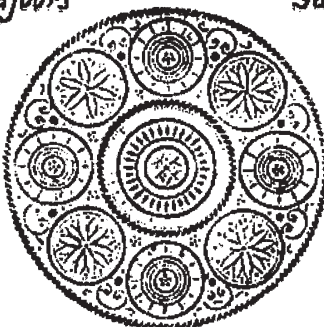
4.289 / 5
Sans ajours



4.288 / 5
Sans ajours



4.270 Sans ajours / 5



23.337 / 5
Sans ajours En 1/2 plein



4.271 / 5
Sans ajours



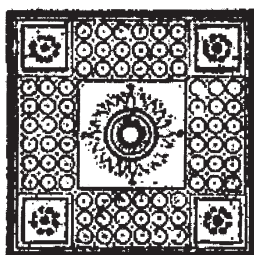
4.290 / 5
Sans ajours



4.287 / 5
Sans ajours



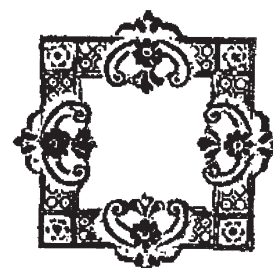
4.286 / 5
Sans ajours



2.319 T /
Sans ajours



2.318 / 5
Centre ajouré



2.320 / 5
Centre ajouré
Embouti: 2353 / 5

TOUTES CES PIÈCES SONT EN PLEIN OU 1/2 PLEIN

BARRETTES FILIGRANES



9302 / J



9305 / J



9322 / J



9311 / J



9314 / J



9303 / J



9306 / J



9321 / J



9312 / J



9315 / J



9304 / J



9307 / J



9320 / J



9313 / J



9316 / J



9355 / J



9327 / J



9356 / J



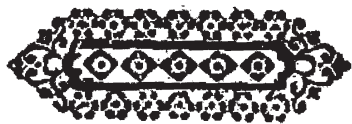
J/9358 Centre plein



9342 / J
Sans ajours



9357 / J



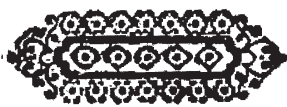
9317 / J



9308 / J



9328 / J



9318 / J



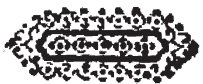
9309 / J



9310 / J



9329 / J



9319 / J



9349 / J



9330 / J



9361 / J



J/9360 Sans ajours



9362 / J

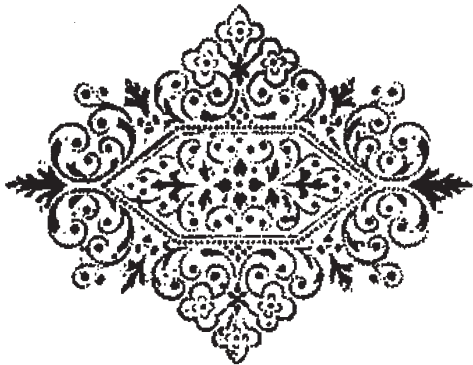


9350 / J



J/9359 Sans ajours

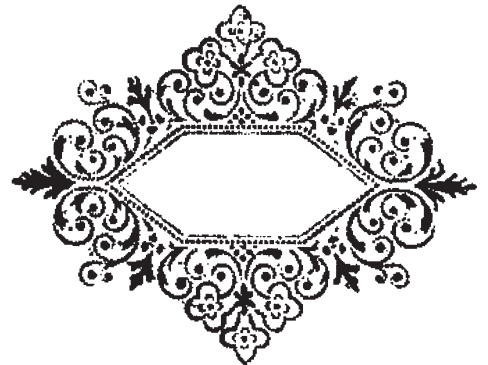
FILIGRANES



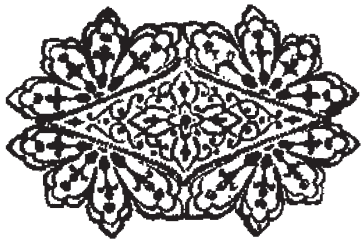
10.655 / J



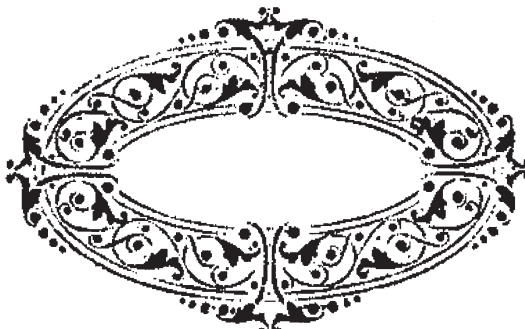
Contour sans ajours
J / 9.352 centre ajouré
9.351 centre plein



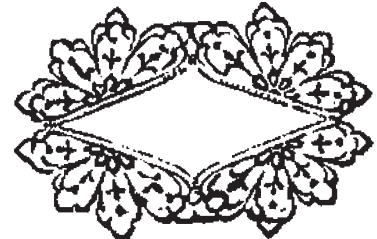
5.513 / J



10.657 / J



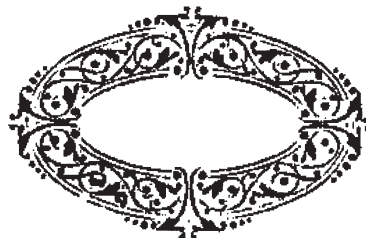
10.667 / J



5.514 / J



10.663 / J



10.668 / J



10.664 / J



10.666 / J



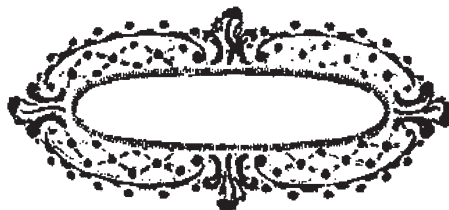
10.669 / J



10.665 / J



J / 9.325 centre ajouré
9.324 centre plein
9.326 sans cadre intérieur

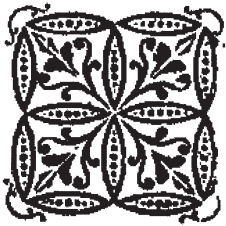


J / 2847 centre ajouré
2848 embouti



J / 9.335 centre ajouré
9.334 centre plein
9.336 sans cadre intérieur

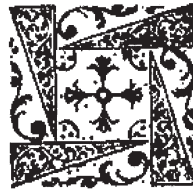
FILIGRANES



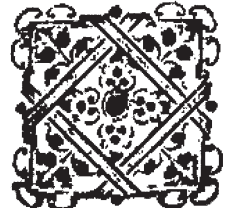
2851 / J
Emb.: 2852-2853 / J



2891
Emb.: 2892-2893 / J



2749 / J



J /
2872. Emb.: 2874
Centre ajouré: 2871
Embouti centre ajouré: 2873



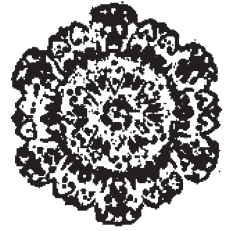
2846 / J



2400
Emb.: 2401 / J



2822
Emb.: 2823-2824 / J



2273
Emb.: 2283 / J



2737 / J
Emb.: 2738 - 2739
Autre gravure: 2737 bis
Emb.: 2738 bis - 2739 bis

En 1/2 boule: / J
2740 / J



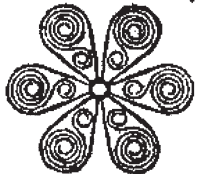
2742. Emb.: 2744
boules 2743 / J
perles: 2745 / J



2778
Emb.: 2779
Emb. en 1/2 boule: 2780



J
2746 - Emb.: 2747 / J
Emb. en 1/2 boule: 2748 / J



8952 / J
En 1/2 boule: 8954 / J



2819
Emb.: 2820
2821 / J



2918
Sans ajours



2841 ajouré
Emb.: 2842-2843-2844 / J



2158
Emb.: 2157-2159 / J



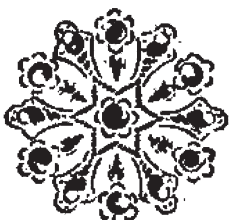
2593
Emb.: 2594 / J



2838
Emb.: 2839 / J



2952 / J



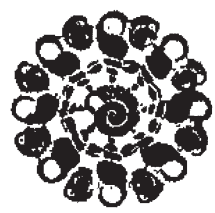
2890 / J



2885 / J



2958
Centre plein: 2959 / J



2957 / J

FILIGRANES



2.146 / J



1.804 / J



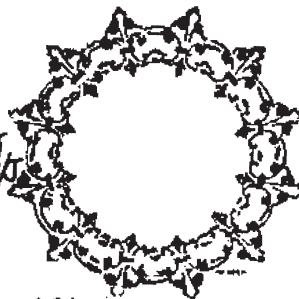
1.819 / J



2.987 / J



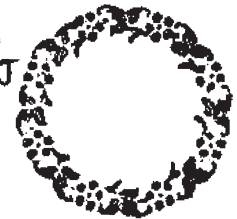
2.354 / J
Embouti: 2356 / J
En 1/2 boule: 2355 / J



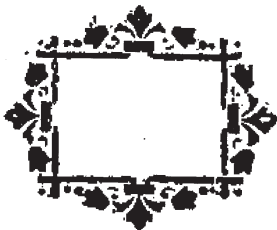
1.970
Embouti: 1971.1972 / J



2.497
Embouti: 2498 / J



J / 2.989 ajouré



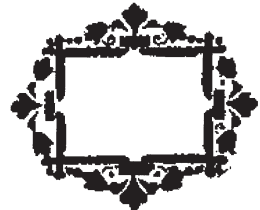
1.836 / J



1.852
Embouti: 1852 Bis / J



2.187 / J



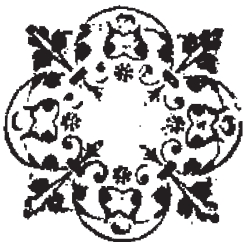
1.837 / J



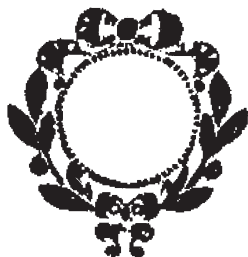
1.967 / J
Embouti: 1.968.1.969 / J
Avec cuvette en relief au centre:
J / 2036-2037



23.183 / J
Embouti en clochette: 23.184 / J



1.930
Embouti: 1.931 / J



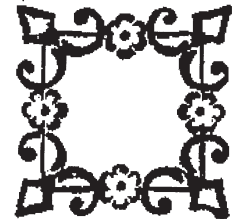
J / 3.961
Pour similis: 3.774 / J



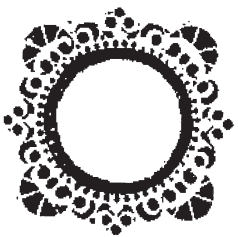
2.476: Centre ajouré
2.475: Centre plein



3.960 / J



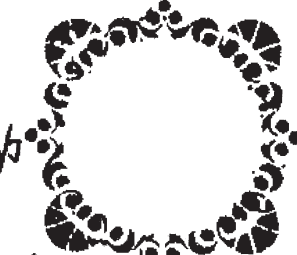
1.774 / J



2.183 / J



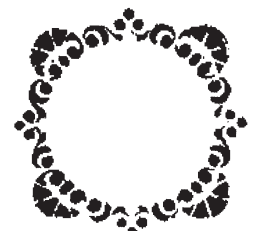
1.711 / J
Contours sans ajours
Centre ajouré



J / 1.717
Centre ajouré
Contours sans ajours



1.715 / J
Contours sans ajours
Centre ajouré



1.714 / J
Contours sans ajours
Centre ajouré



J / 1.716
Contours sans ajours
Centre ajouré

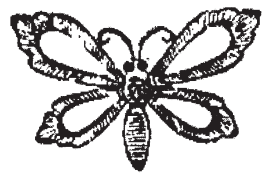
FILIGRANES GENRE BRODERIE



2641 / J
Emb.: 2642-2649
En 1/2 boule: 2640 / J



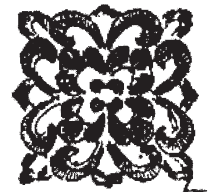
2655 / J
Emb.: 2657 / J
Centre ajouré: 2656 / J



2694
Embouti: 2695



2634 / J
Emb.: 2635-2636 / J
En 1/2 boule: 2637 / J
En gland: 2638 / J



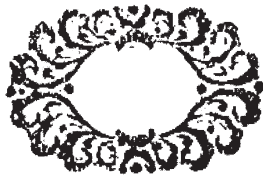
2623 / J
Emb.: 2624-2625 / J
En 1/2 boule: 2632 / J
En gland: 2633 / J



2653 / J



2659 / J



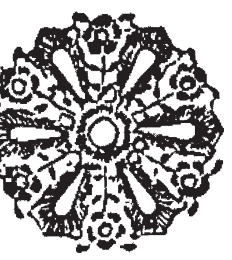
2697
Embouti: 2698



2658 / J



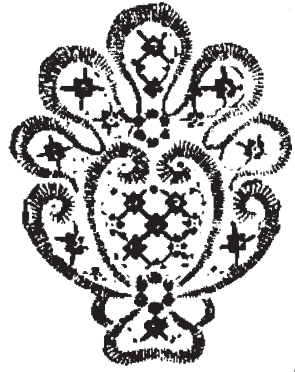
2652
Embouti: 2654 / J



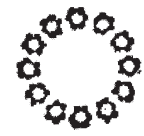
2606 / J
Emb.: 2607-2608-2609 / J
En 1/2 boule: 2610
En gland: 2950-2951 / J
2960



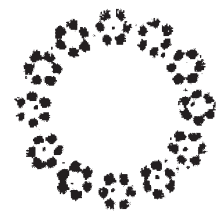
2611 / J
Emb.: 2612 / J
2613 / J



2766
Embouti: 2767 / J



2647
Emb.: 2648
Fleurettes non percées: 266A / J



2645
Emb.: 2646
Fleurettes non percées: 2663 / J



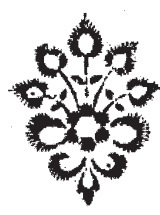
2010
Emb.: 2009-2628 / J



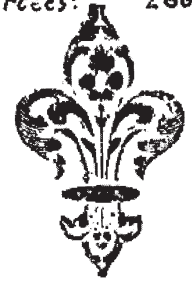
2617
Emb.: 2618-2619 / J



2629
Emb.: 2630-2631 / J



2614
Emb.: 2615-2616 / J



2679
Emb.: 2680-2681 / J



2750
Emb.: 2751 / J



2775
Emb.: 2776
En gland: 2777 / J



2706 J
Emb.: 2707-2708 J

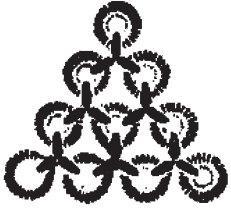


2682 / J
Emb.: 2683-2684 / J



2692
Emb.: 2693 / J

FILIGRANES GENRE BRODERIE



2726 / J
Emb.: 2752 / J



2651 / J
Emb.: 2702 / J



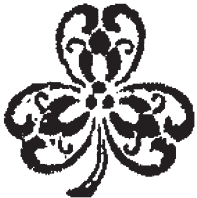
2667 / J
Emb.: 2668-2669-2670 / J



2673 / J



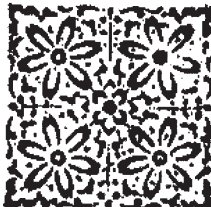
2626 / J



2675 / J
Emb.: 2676 / J



2711 / J



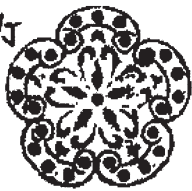
Emb.: 2712-2713 / J J/2808-Emb.: 2810 / J
2714-2715 / J En bouc. En gland:
2809 / J J/2854-2855 / J



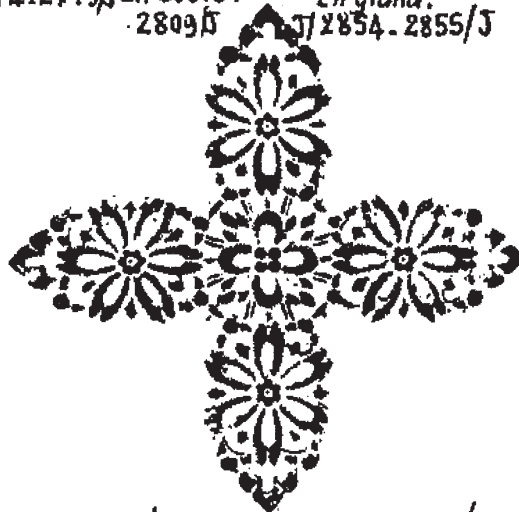
2604
Emb.: 2605 / J



2677
Emb.: 2678 / J



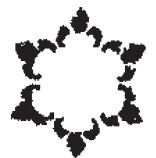
2674
Emb.: 2685-2686
2696



J/2672 - En bouc.: 2671 / J



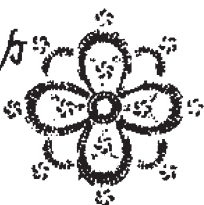
2689
Emb.: 2690 / J
2691



2650 / J



2687 / J
Et 1/2 bouc.: 2688 / J



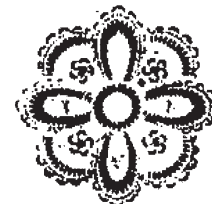
2709
Emb.: 2710 / J



2814
Emb.: 2815 / J
2816



2639
Emb.: 2643-2644 / J



2724
Emb.: 2725 / J



2620
Emb.: 2621 / J
2622



2783
Emb.: 2784 / J



2865
Emb.: 2866-2867 - / J
2868-2869 -



2806
Emb.: 2807 / J
Centre plein: 3242

BARKETTES FILIGRANÉES



2147 / J
En plein ou en 1/2 plein



J/2026 En 1/2 plein



2135 / J
En plein ou en 1/2 plein



2117 / J
En plein ou en 1/2 plein



2246 / J
En 1/2 plein



2110 / J
En plein ou en 1/2 plein



2127 / J
En plein ou en 1/2 plein



J/2233 En 1/2 plein



2116 / J
En plein ou en 1/2 plein



3754 / J
En 1/2 plein



3753 / J
En 1/2 plein



2243 / J
En 1/2 plein



2324 / J
En 1/2 plein



2326 / J
En 1/2 plein



2272 / J
En 1/2 plein



J/2338 Sans ajours
En plein ou en 1/2 plein



J/2334 Sans ajours
En 1/2 plein



J/2399 Centre ajouré
En plein ou en 1/2 plein



2056 / J
En plein



2066 / J
En plein



2285 / J
En plein



1997 / J
En plein



2027 / J
En plein



1966 / J
En plein

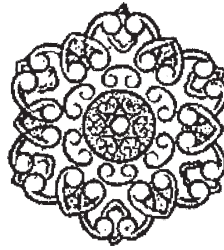
MOTIFS AJOURÉS



2588 Etoile au centre gravée non ajourée / 2589 Etoile au Centre emboutie



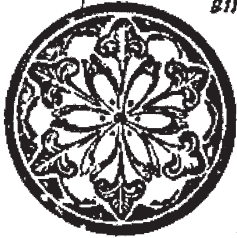
2515 / 5
Emb.: 2516



2811 /
Emb.: 2812-2813 / 5



2149 / 5
Emb.: 2154-2155 / 5



23.186 / 5



23.187 / 5



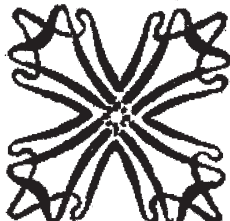
23.185 / 5



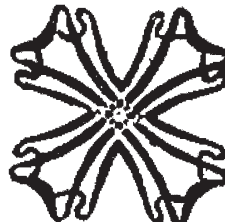
23.188 / 5



3.316 / 5



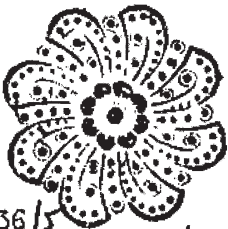
3.413 / 5



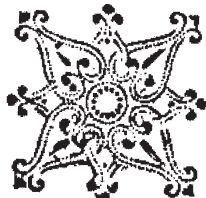
3.414 / 5



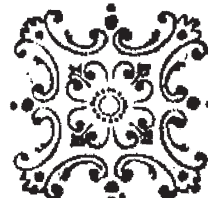
3.315 / 5



2436 / 5
Embouti: 2437 / 5
Embouti en 1/2 boule: 2472 / 5



1832 / 5
Embouti en gland: 2828 / 5



1851 / 5
Emboutis: 2528-2504 / 5
En gland: 2833-2834 / 5



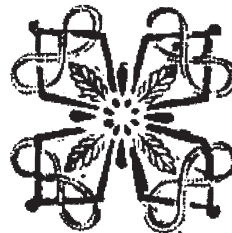
2403 / 5
Embouti: 2433 / 5



2151 / 5
Emboutis: 2152-2153 / 5



3622 / 5
Embouti: 3623 / 5
En 1/2 boule: 3665 / 5



3624 / 5
Embouti: 3625 / 5
Embouti en 1/2 boule: 3666 / 5



2998 / 5
Embouti: 2996 / 5



2547 / 5
Embouti: 2546 / 5



2555 / 5
Embouti: 2556 / 5
Sans ajours



2444 / 5
Embouti: 2445 / 5

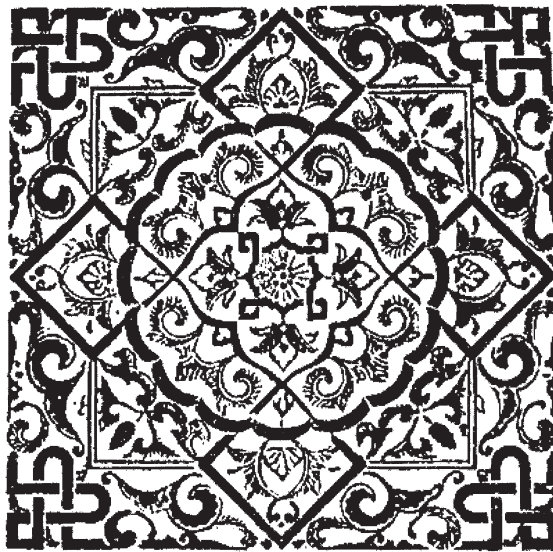


2427 / 5
Emboutis: 2428-2429 / 5

FILIGRANES



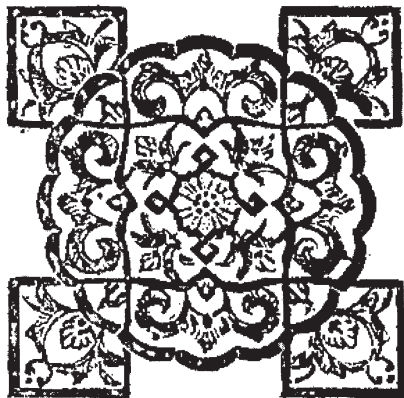
13.600
Embouti : 13.601 / J



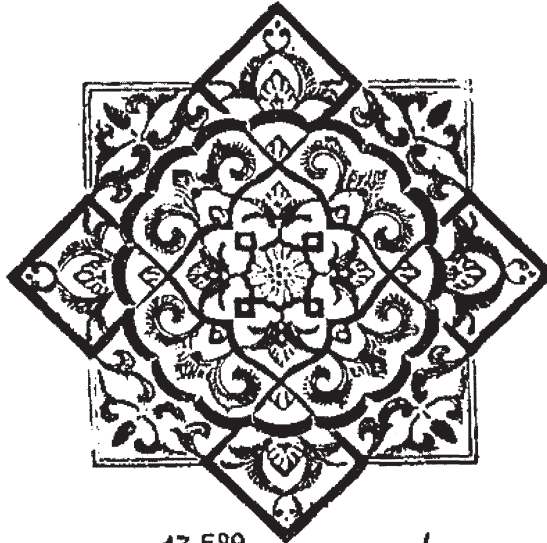
13.587
Embouti : 13.588 / J



4.503
Embouti : 4.504 / J
Avec chatons pour pierres



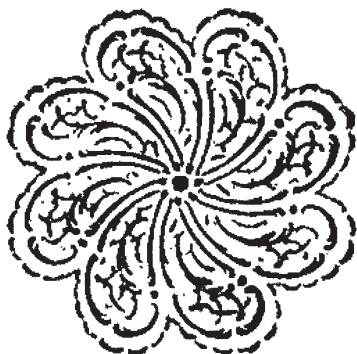
13.598
Embouti : 13.599 / J



13.589
Embouti : 13.590 / J



13.591
Embouti : 13.592 / J



13.602
Embouti : 13.603 / J



13.593
Embouti : 13.594 / J



4.537
Embouti : 4.538 / J
Avec chatons pour pierres

FILIGRANES



13.204/J



13.203/J



13.202/J



13.205/J



13.206/J



13.207/J



13.259/J



13.258/J



13.257/J



13.256/J



13.260/J



13.261/J



13.262/J



13.263/J



13.248/J



13.246/J



13.244/J



13.236/J



13.243/J



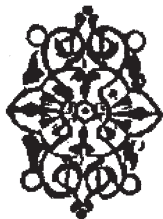
13.245/J



13.247/J



13.254/J



13.252/J



13.250/J



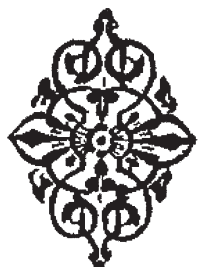
13.237/J



13.249/J



13.251/J



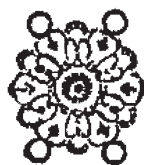
13.253/J



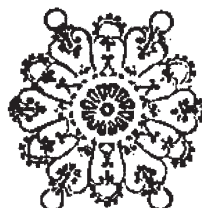
13.235/J



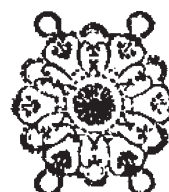
13.234/J



13.240/J



13.242/J



13.241/J



13.213/J



13.214/J

FILIGRANES



13.218 /J
Avec pattes: 8.343/J



13.217 /J
Avec pattes: 8.342 /J



13.265 /J



13.266 /J



13.238 /J



13.215 /J
Avec pattes: 8.340 /J



13.216 /J
Avec pattes: 8.341 /J



13.264 /J



13.224 /J



13.220 /J



13.221 /J



13.219 /J



13.223 /J



13.222 /J

Avec pattes: 8.345 /J



13.228 /J



13.208 /J
Sans ajours



13.255 /J



13.209 /J
Sans ajours



13.229 /J



13.231 /J



13.230 /J



13.239 /J



13.232 /J



13.233 /J



13.212 /J



13.211 /J



13.210 /J



13.225 /J



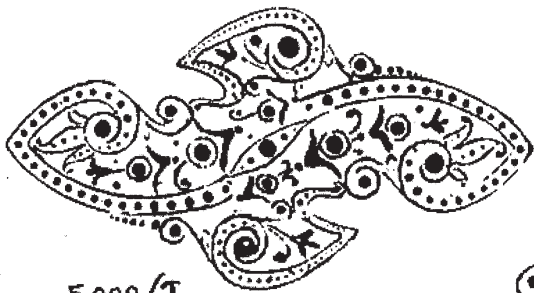
13.227 /J



13.226 /J

Les modèles avec pattes sont semblables au N° 13.219

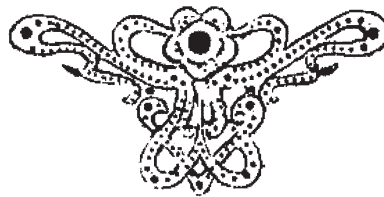
FILIGRANES



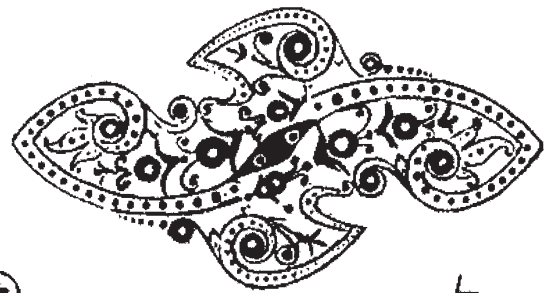
5.008/J
Filigrané et perlé
J/5.009 Embouti



J/5.012 Filigrané et perlé
J/5.013 Embouti



J/5.041 Perlé
5.042 Embouti



5.010/J
Pour pointes d'acier
J/5.011 Embouti



J/5.014 Pour pointes d'acier
5.015 Embouti



J/5.022 Pour Pointes d'acier
5.024 Embouti
J/5.026 A plat avec 3 anneaux
J/5.028 Embouti avec 3 anneaux



J/10.632 Embouti



J/10.633 Embouti



J/5.023 Pour Pointes d'acier
5.025 Embouti
5.027 A plat avec 3 anneaux
5.029 Embouti avec 3 anneaux



5.019/J
J/5.021 Embouti

5.018 J/
J/5.020 Embouti



J/10.530 A plat



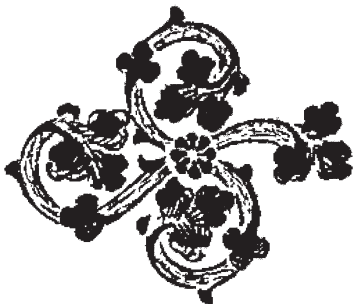
J/10.634 Embouti



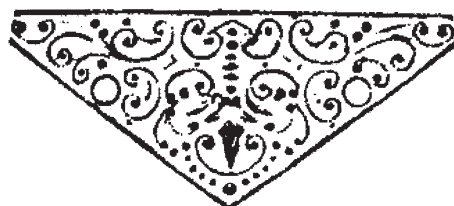
J/5.057 Pour Pointes d'acier
J/5.058 Sans anneaux



J/5.036 Aplat



J/10.261 A plat



J/5.039 A plat perlé



J/10.262 A plat

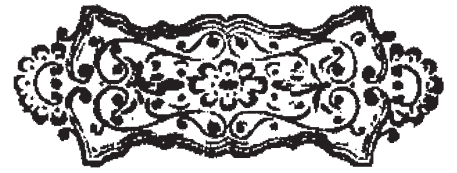
BARETTES FILIGRANÉES



J/ 9.220 à plat



J/ 5.056 à plat



J/ 9.219 Embouti



J/ 9.225 Embouti



J/ 9.223 à plat



J/ 9.221 Embouti



J/ 9.226 à plat



J/ 9.224 à plat



J/ 9.236 En relief



J/ 9.237 En relief



J/ 5.053 à plat



J/ 5.055 à plat



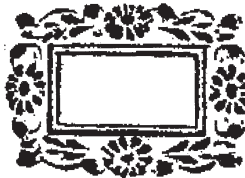
J/ 9.238 En relief



J/ 5.054 à plat



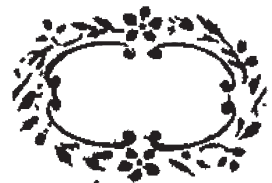
J/ 9.235 En relief



J/ 3.218



J/ 9.239 à plat



J/ 9.216



J/ 9.217



J/ 9.240 à plat



J/ 9.215

GLANDS AJOURÉS



2.950 / J



2.940 / J



2.828 / J



3.504 / J



2.566 / J



2.949 / J



2.833 / J



3.042 / J



2.686 / J



2.961 / J



2.960 / J



2.877 / J



3.066 / J



2.946 / J



3.095 / J



3.689 / J



2.764 / J



2.956 / J



2.765 / J



2.876 / J



2.666 / J



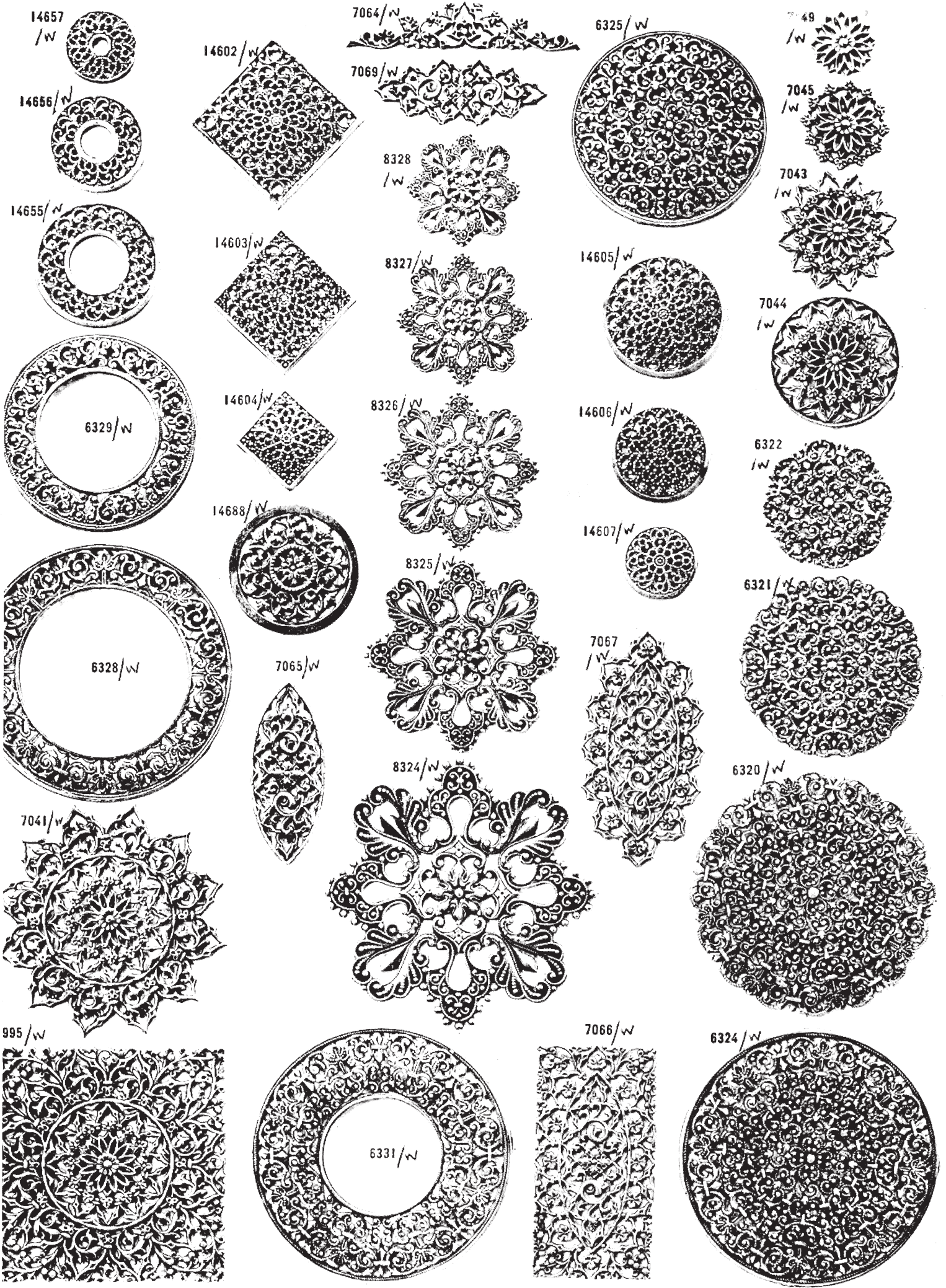
6.061 / J

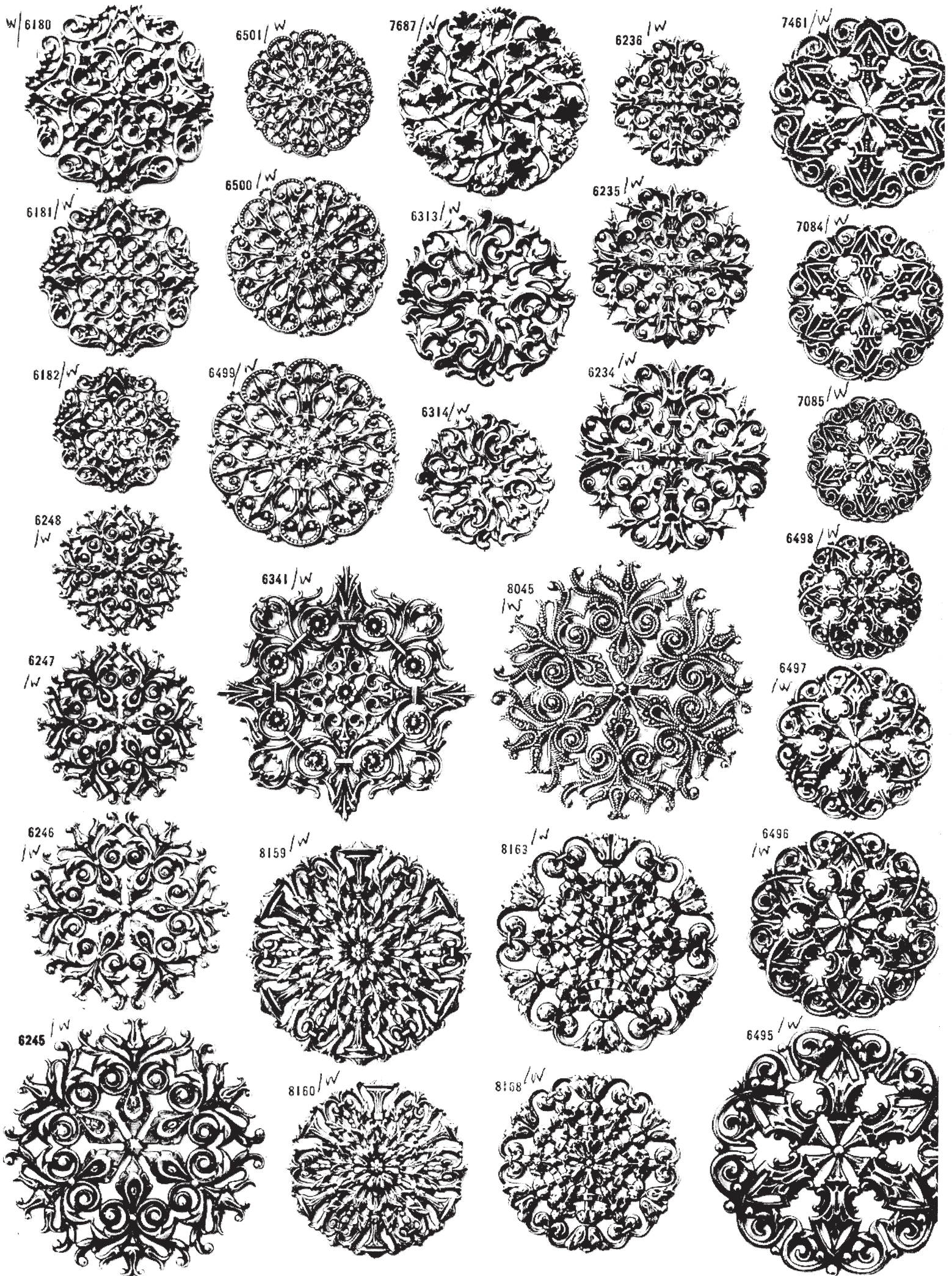


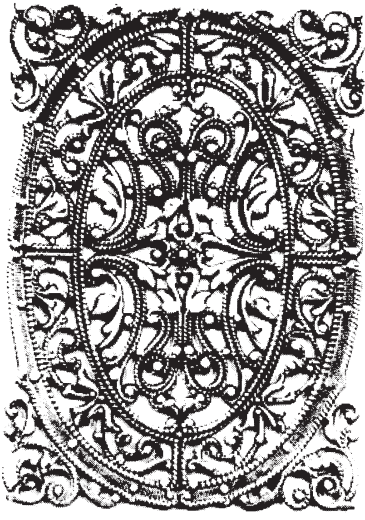
3.327 / J



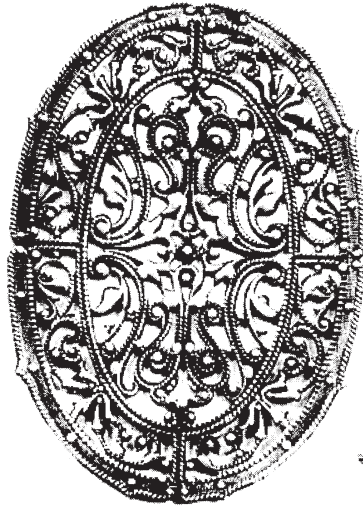
2.685 / J







40045/G



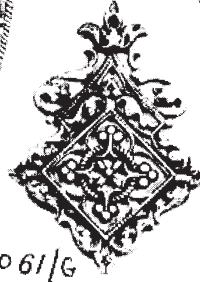
40050/G



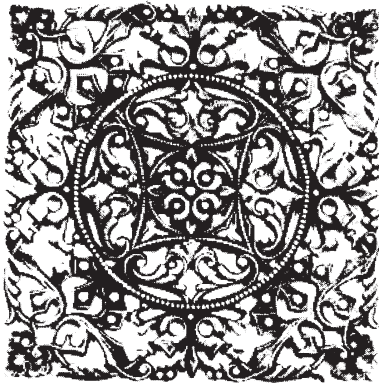
40656/G



40215/G



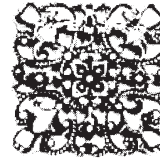
40061/G



40077/G



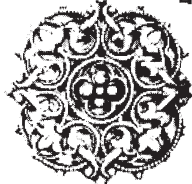
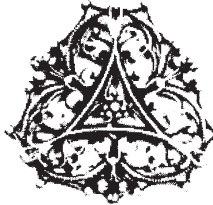
40520/G



40168/G



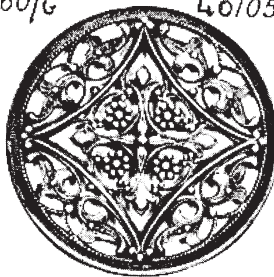
40216/G



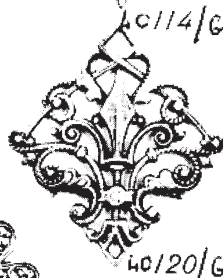
40114/G



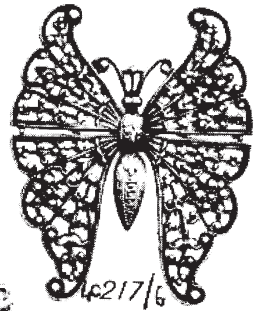
40060/G



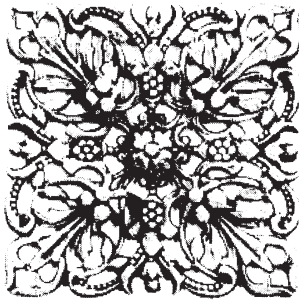
40105/G



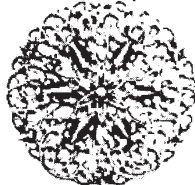
40120/G



40217/G



40186/G



40003/G



40078/G



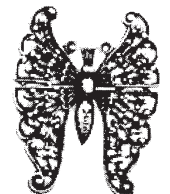
40012/G



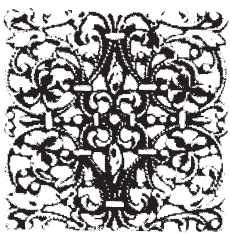
40037/G



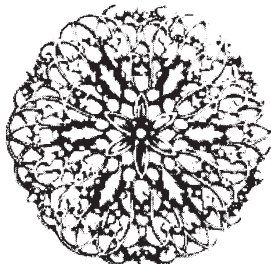
40190/G



40218/G



40169/G



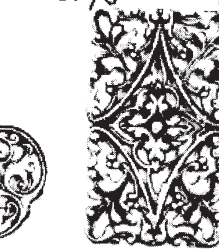
40001/G



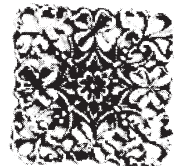
40079/G



40011/G



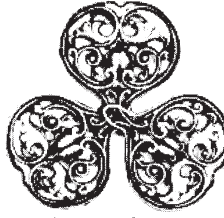
40062/G



40521/G



40080/G



40010/G



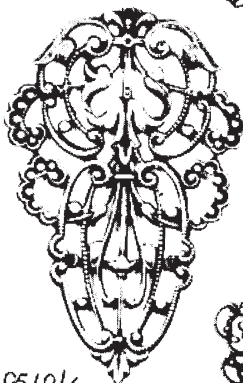
4044/G



40175/G



40829/G



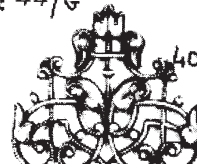
40519/G



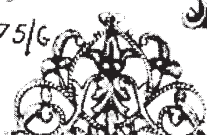
40854/G



40485/G



40523/G



40043/G